

Installation instructions

For set # 7.3122
350Z-G35 REAR SET



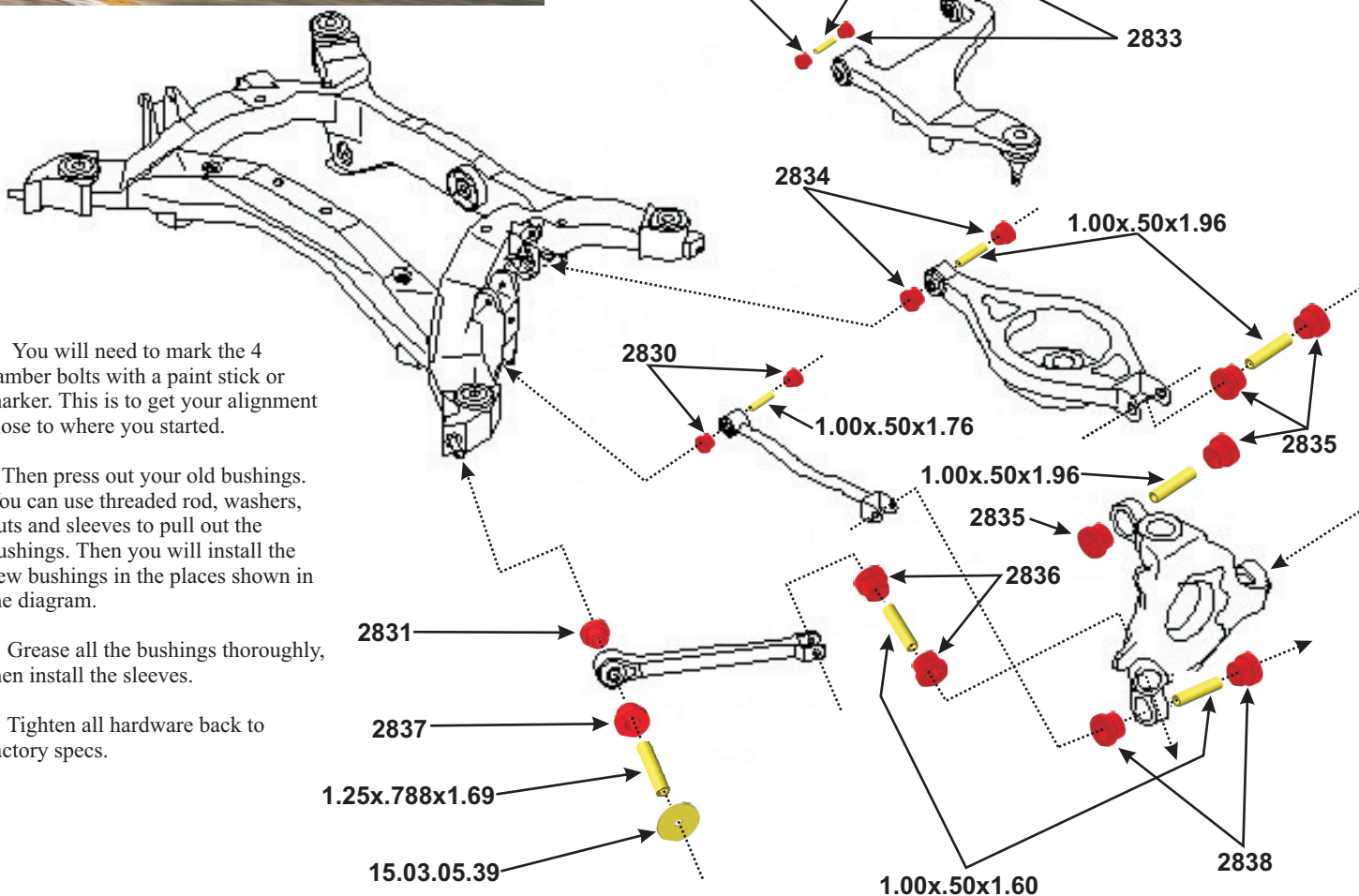
1131 VIA CALLEJON, SAN CLEMENTE, CA 92673

© 2011 Energy Suspension. All rights reserved.
May not be reproduced, in any form, or by any means,
without the written consent of Energy Suspension.

It is recommended that if you are unfamiliar with this type of work that you refer to a qualified service center specializing in this type of work. It is also recommended that if you choose to do this work yourself that a factory service manual be obtained for the proper procedures pertaining to removal, replacement and proper torque specifications for your vehicle. This instruction set is intended as a guideline for the safe installation of Energy Suspension's polyurethane bushings, once you have removed the factory components from your vehicle.

Parts list:

4-2830 FRT LWR LINK	2-2834 LWR LINK ARM	2-1.25x.788x1.69 RAD ROD SLV	1-17556 INSTRUCTIONS
2-2831 RAD ROD INNER	8-2835 RR KNUCKLE TOP & FWD	2-1.00x.500x1.76 FRT LWR LINK SLV	2-9.11113 GREASE
4-2832 SUSP ARM FWD	4-2836 KNUCKLE UPPER BTM	10-1.00x.500x1.96 SUSP ARM, SPRING ARM	2-15.03.05.39
4-2833 SUSP ARM REAR	2-2837 RAD ROD OUTER	UPPER & REAR KNUCKLE	WASHER
	4-2838 LWR KNUCKLE LINK ARM	4-1.00x.500x1.60 BOTH BTM KNUCKLE	



1. You will need to mark the 4 camber bolts with a paint stick or marker. This is to get your alignment close to where you started.

2. Then press out your old bushings. You can use threaded rod, washers, nuts and sleeves to pull out the bushings. Then you will install the new bushings in the places shown in the diagram.

3. Grease all the bushings thoroughly, then install the sleeves.

4. Tighten all hardware back to factory specs.

17556

08/SEP/11 MM