

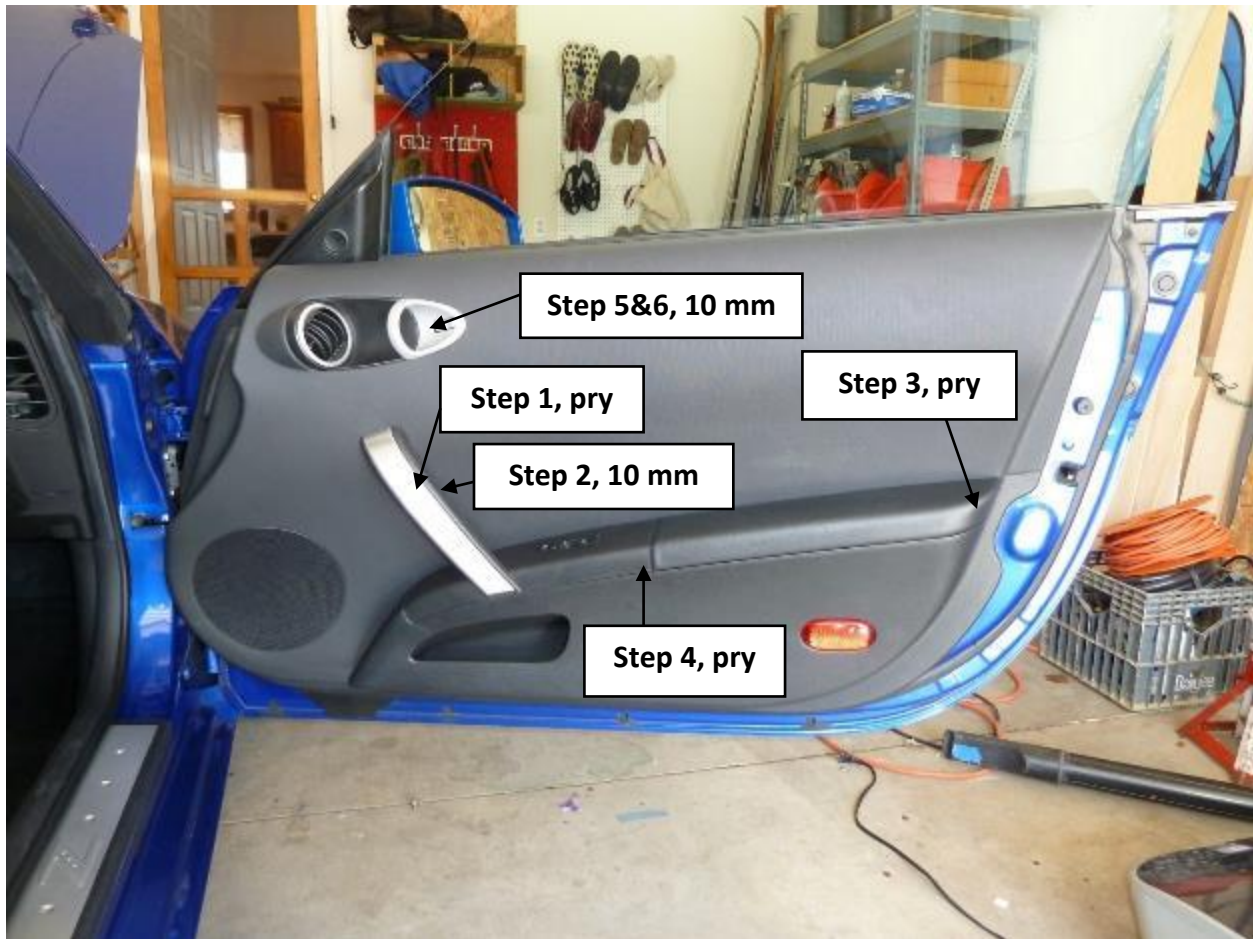
Enjoy the instructions for changing the window motor. These instructions merged content from VO7848 and kwadell. Use at your own risk.

These are draft instructions since I am still working on improvements. The detail shown from my pictures was for the passenger side door.

Additional Suggestions:

1. If you do any amount of interior work buy a auto upholstery removal kit. Search on Amazon for a Astro Pneumatic 4524 Auto Fastener and Molding Removal Tool Set, 11-Piece. I bought this for around \$24 and it's of reasonable quality.
2. Go buy a M6 x 1.00 metric tap and some M6x15mm of M6X20 mm bolts. When you remove the bolts it mucks up about 25% of the threads. Chase the threads with the tap and only re-use the old bolts if the threads are perfect. Otherwise, install the new metric bolts and a washer. (trust me, you'll be doing this again...)Astro



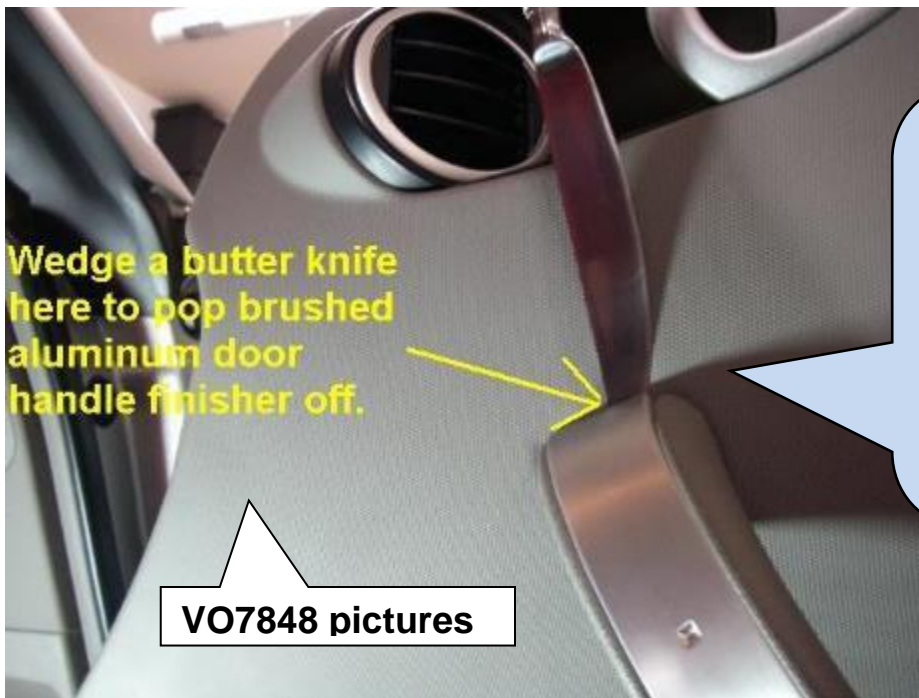


Compliments and credit to VO7848 of my350z.com.

This is my attempt to put it all in one place with some additional pictures.

1. Step 1, Remove the aluminum trim. Start at top, and pry out.
2. Step 2, Remove the handle. It has two 10 mm bolts.
3. Step 3, Remove rear armrest, insert flat object at tip of arrow and pry upward.
4. Step 4, Remove control panel, insert flat object, or lift and pull from where the tip of the arrow is.
5. Step 5, lift the door handle, pry out the plastic part behind the door handle.
6. Step 6, remove the single 10 mm bolt.

STEP 1: Remove the Aluminum Trim.



Wedge a butter knife here to pop brushed aluminum door handle finisher off.

Wrap this table knife in blue painters tape or use the plastic tool in the auto trim removal kit. A flat stick of maple or oak works fine too.

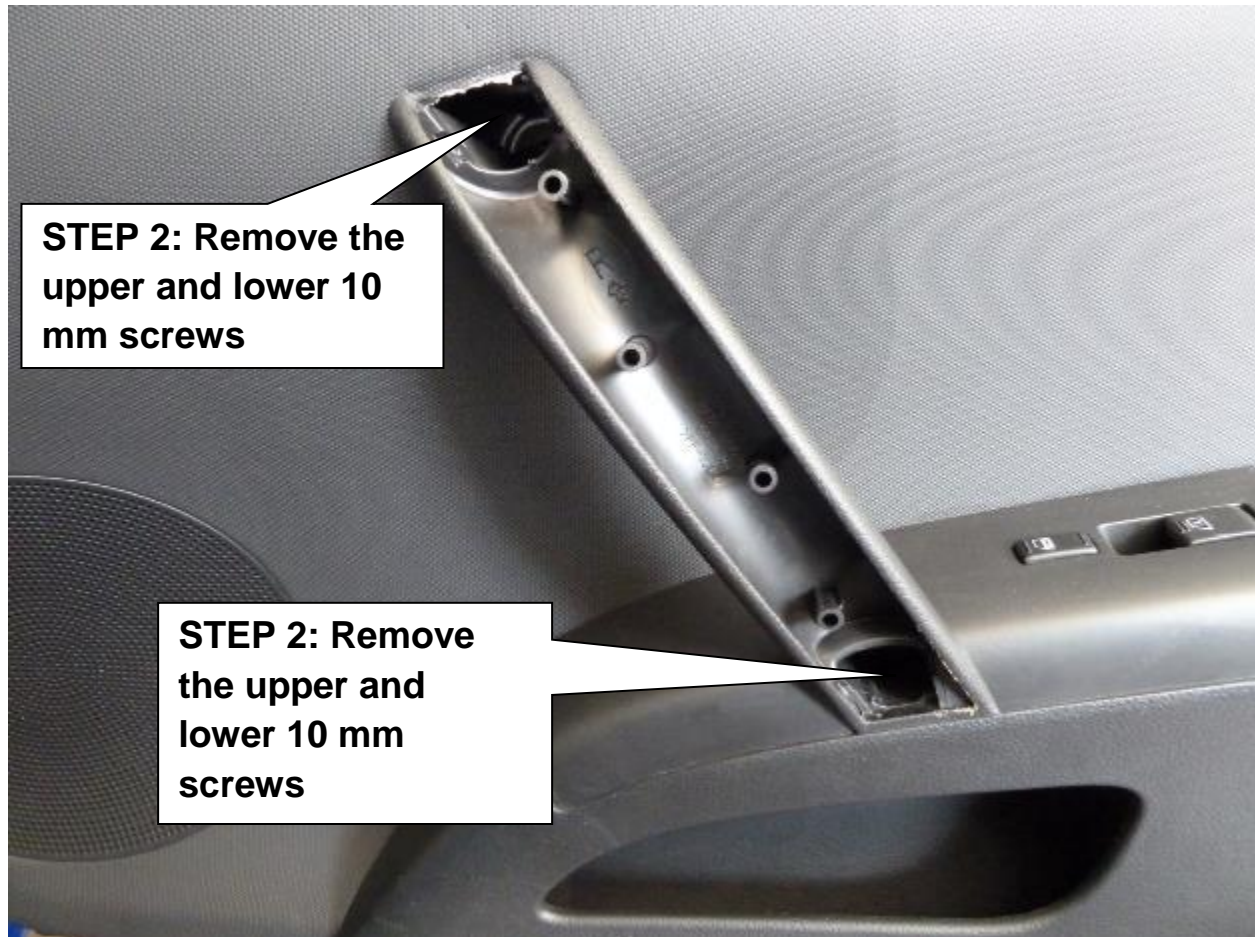
VO7848 pictures

VO7848

STEP 1: Remove the Aluminum Trim.



STEP 1: Aluminum Trim Removed



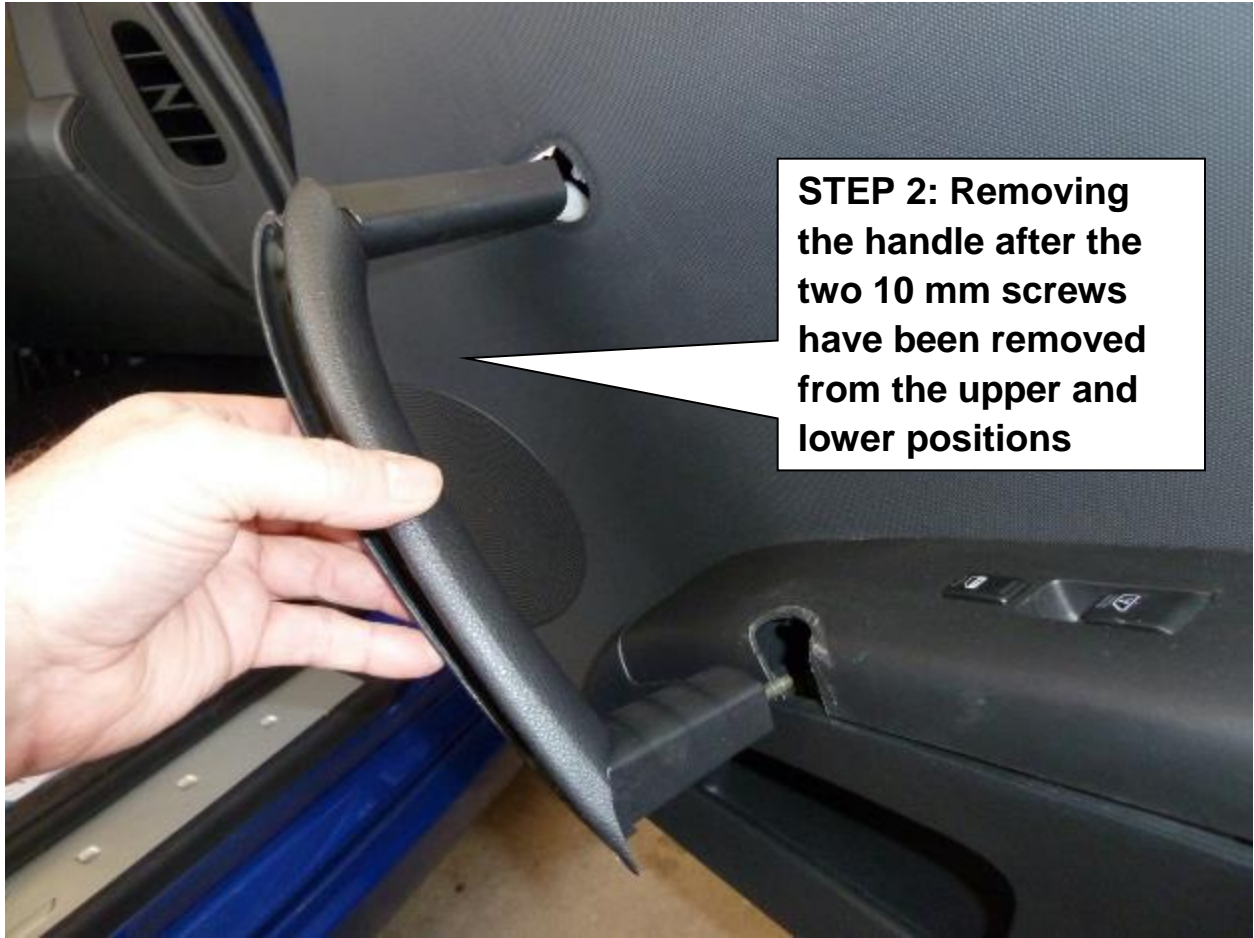


STEP 2: Remove the lower 10 mm screws





STEP 2: Removing the handle after the two 10 mm screws have been removed from the two positions.









STEP 3: Remove the armrest. Start by inserting a flat object at the seam at the rear

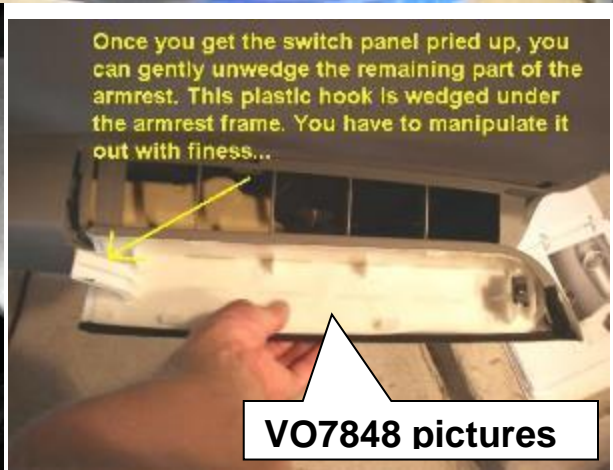
Wrap this table knife in blue painters tape or use the plastic tool in the auto trim removal kit. A flat stick of maple or oak works fine too.



STEP 3: Remove the armrest. I wrapped this in blue painters tape

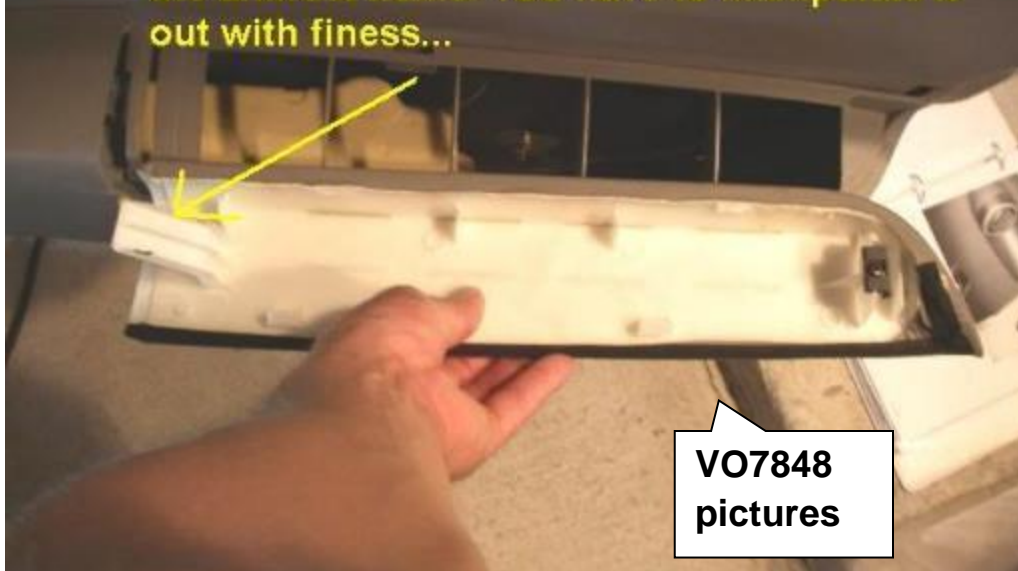
Use butter knife to pry bottom part of door armrest off. This is where the clip is located...

VO7848





Once you get the switch panel pried up, you can gently unwedge the remaining part of the armrest. This plastic hook is wedged under the armrest frame. You have to manipulate it out with finesse...

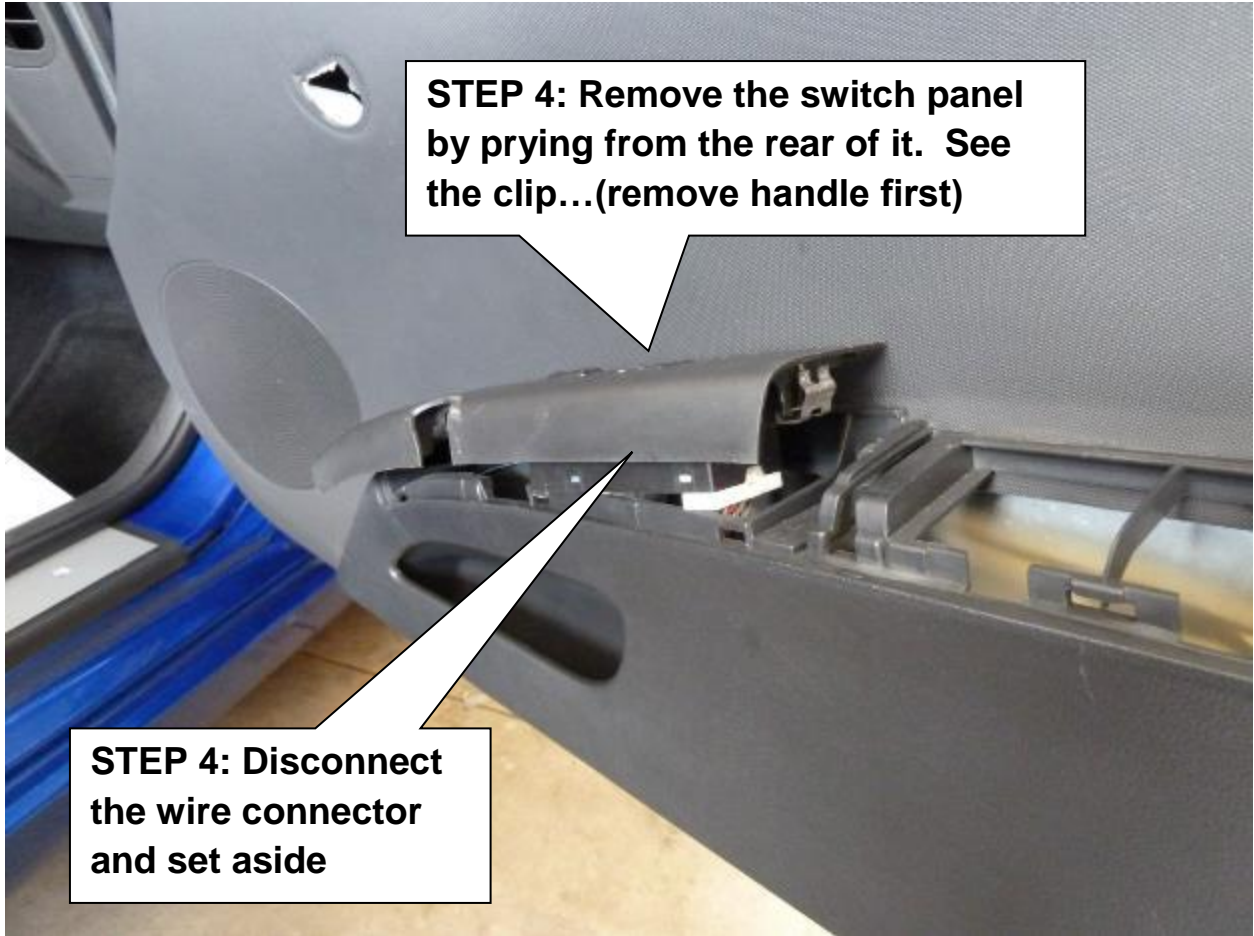


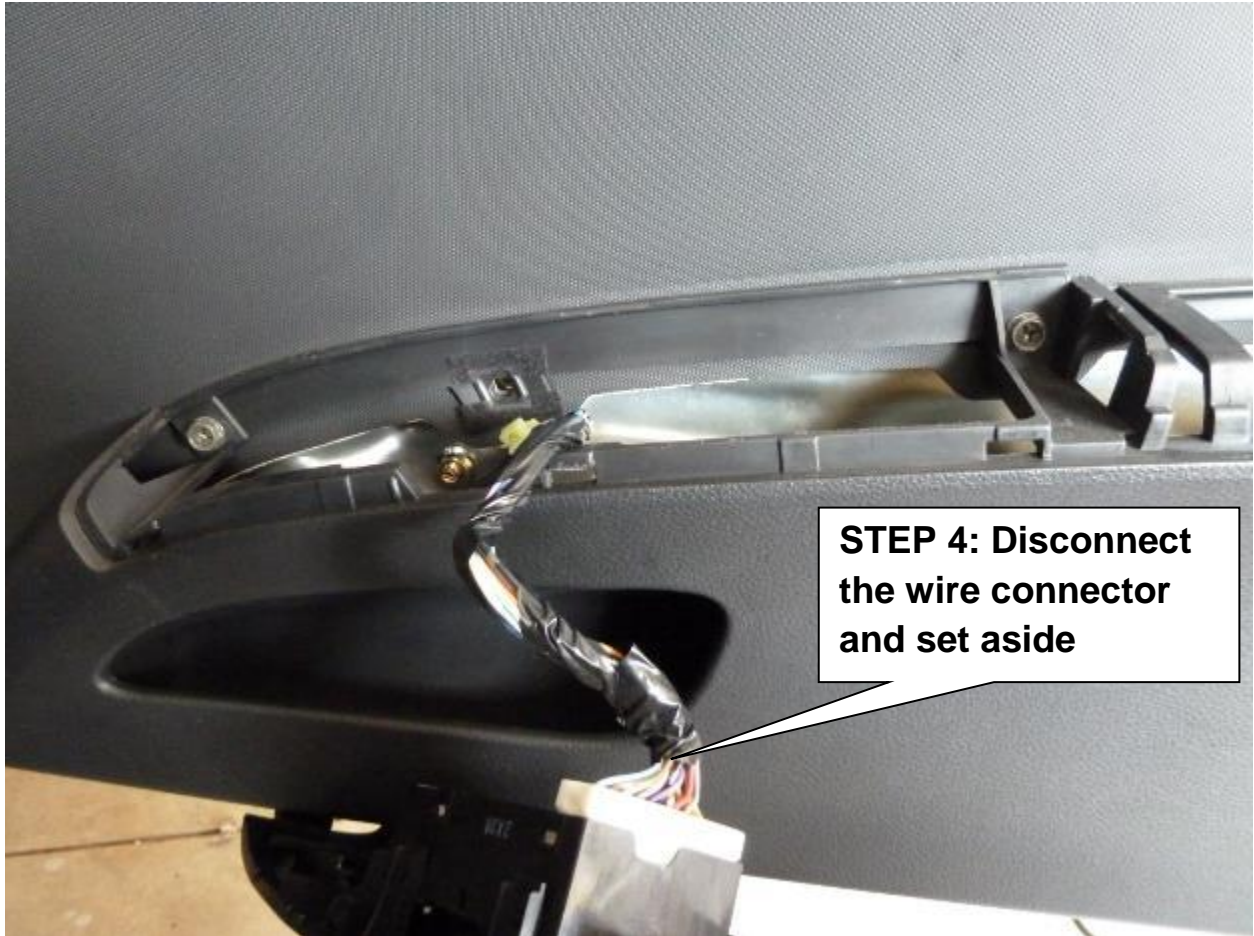
VO7848
pictures

VO7848

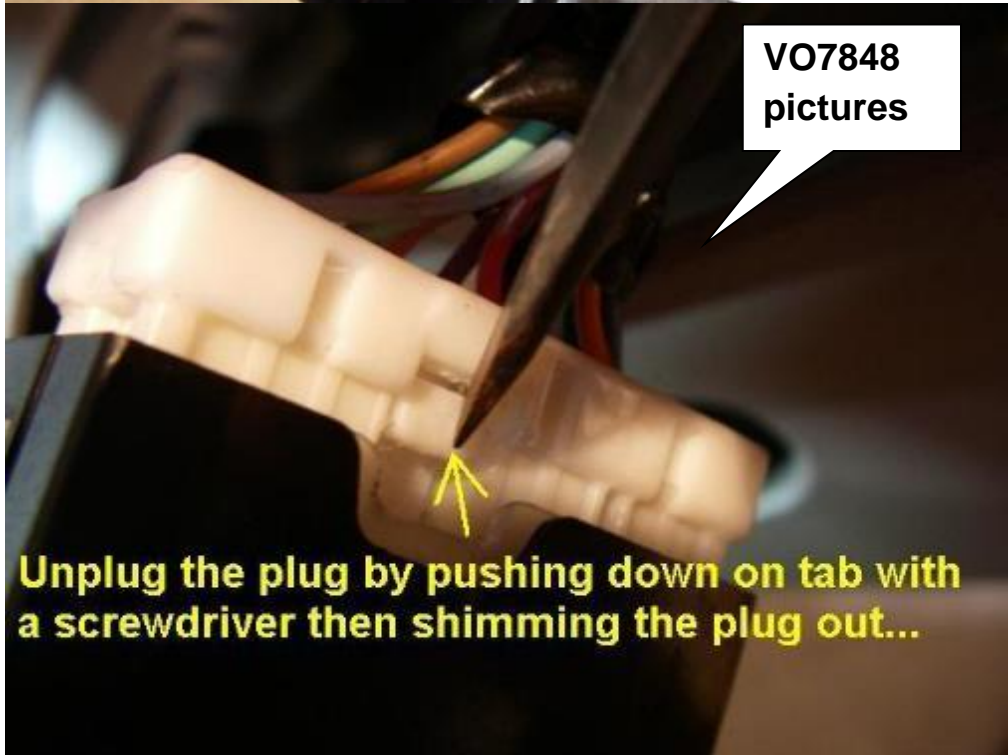






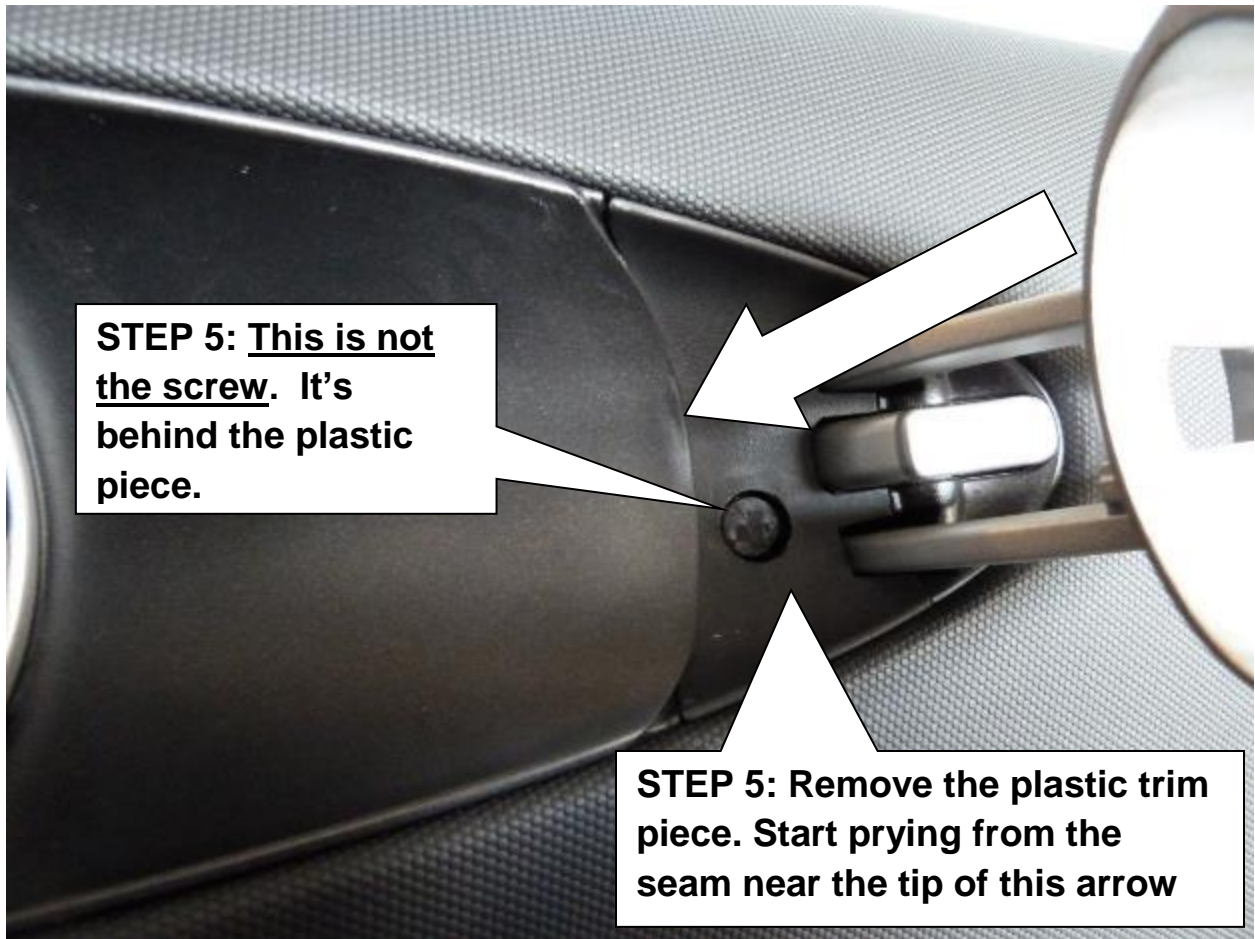


STEP 4: Disconnect the wire connector and set aside



VO7848 pictures

Unplug the plug by pushing down on tab with a screwdriver then shimming the plug out...



STEP 5: This is not the screw. It's behind the plastic piece.

STEP 5: Remove the plastic trim piece. Start prying from the seam near the tip of this arrow



STEP 5: End of step 5 with the plastic trim piece removed.



STEP 5: End of step 5 with the plastic trim piece removed.

STEP 6: Remove the hidden 10 mm screw. Have magnet ready or use a tight fitting socket.



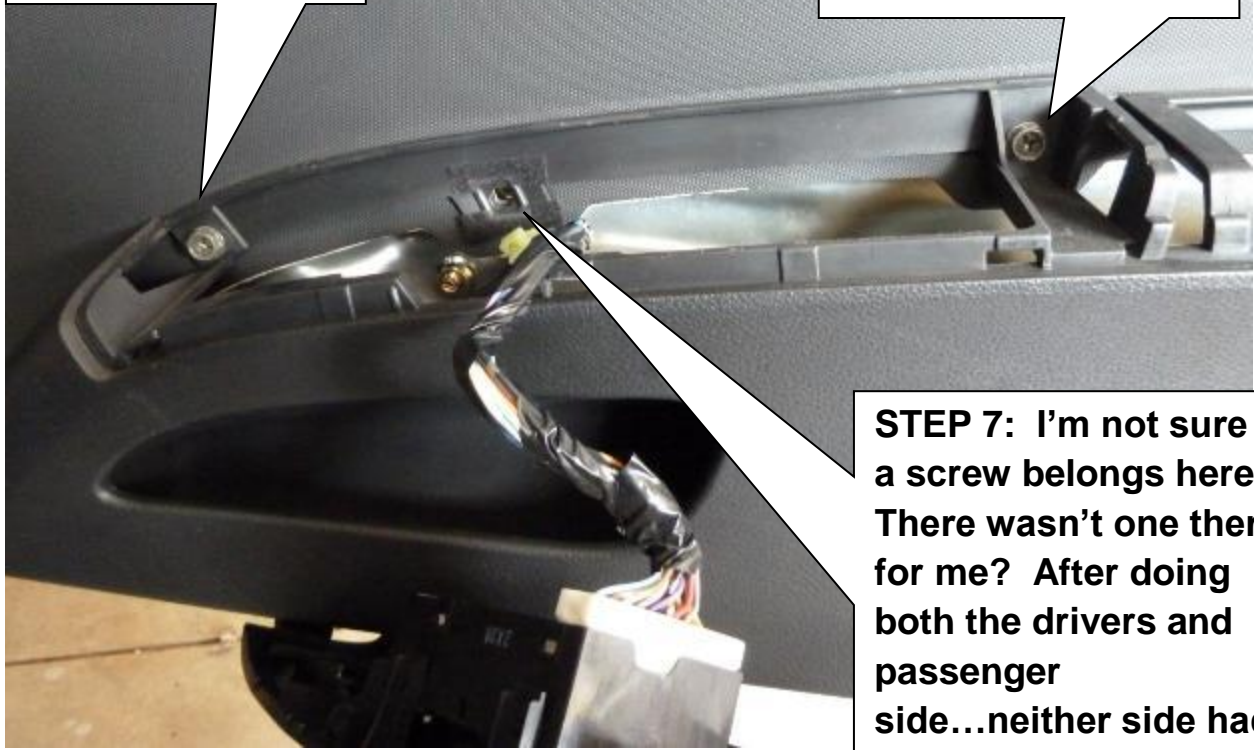
STEP 6: That's the screw on top of the directions I was following...

VO7848 pictures



STEP 7: Remove these two 10 mm screws.

STEP 7: Remove these two 10 mm screws.



STEP 7: I'm not sure if a screw belongs here? There wasn't one there for me? After doing both the drivers and passenger side...neither side had a screw in this location so it should be empty.



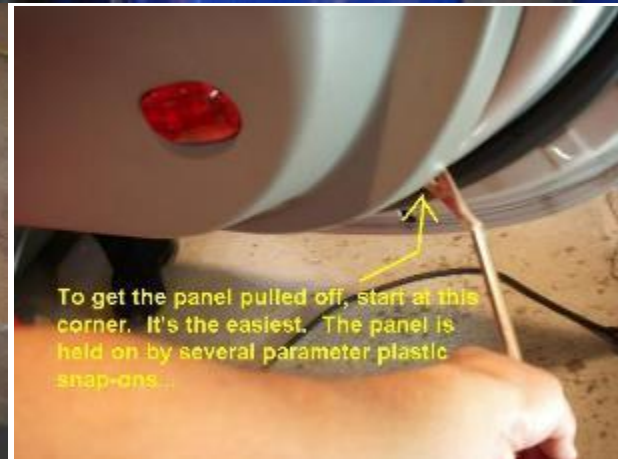
STEP 8: Begin prying the door panel loose...look for the plastic trees and pry near them

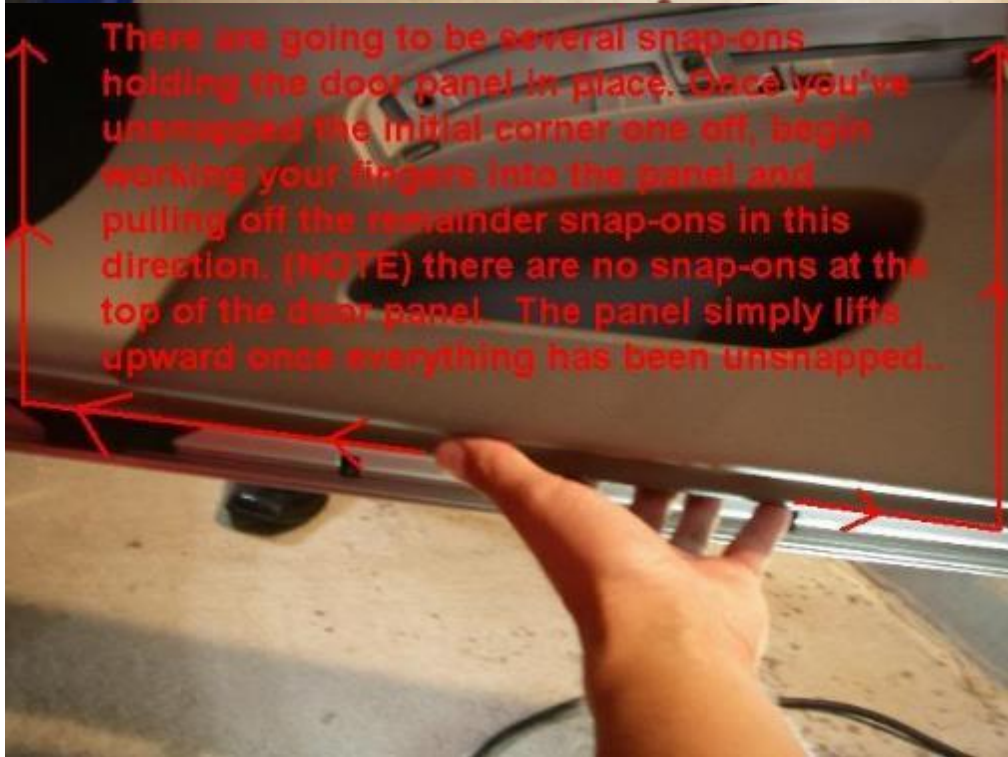


The entire door panel must be removed now. You need a tool to get it started. A flathead screwdriver works. I use a panel popper...



To get the panel pulled off, start at this corner. It's the easiest. The panel is held on by several parameter plastic snap-ons...







Door latch cables

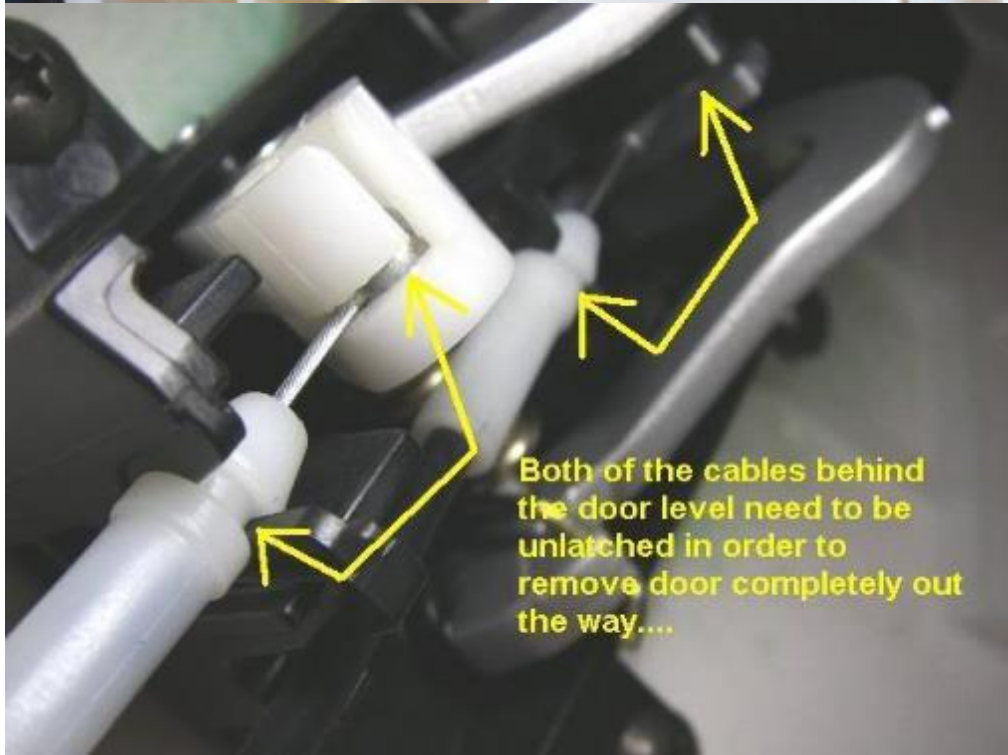
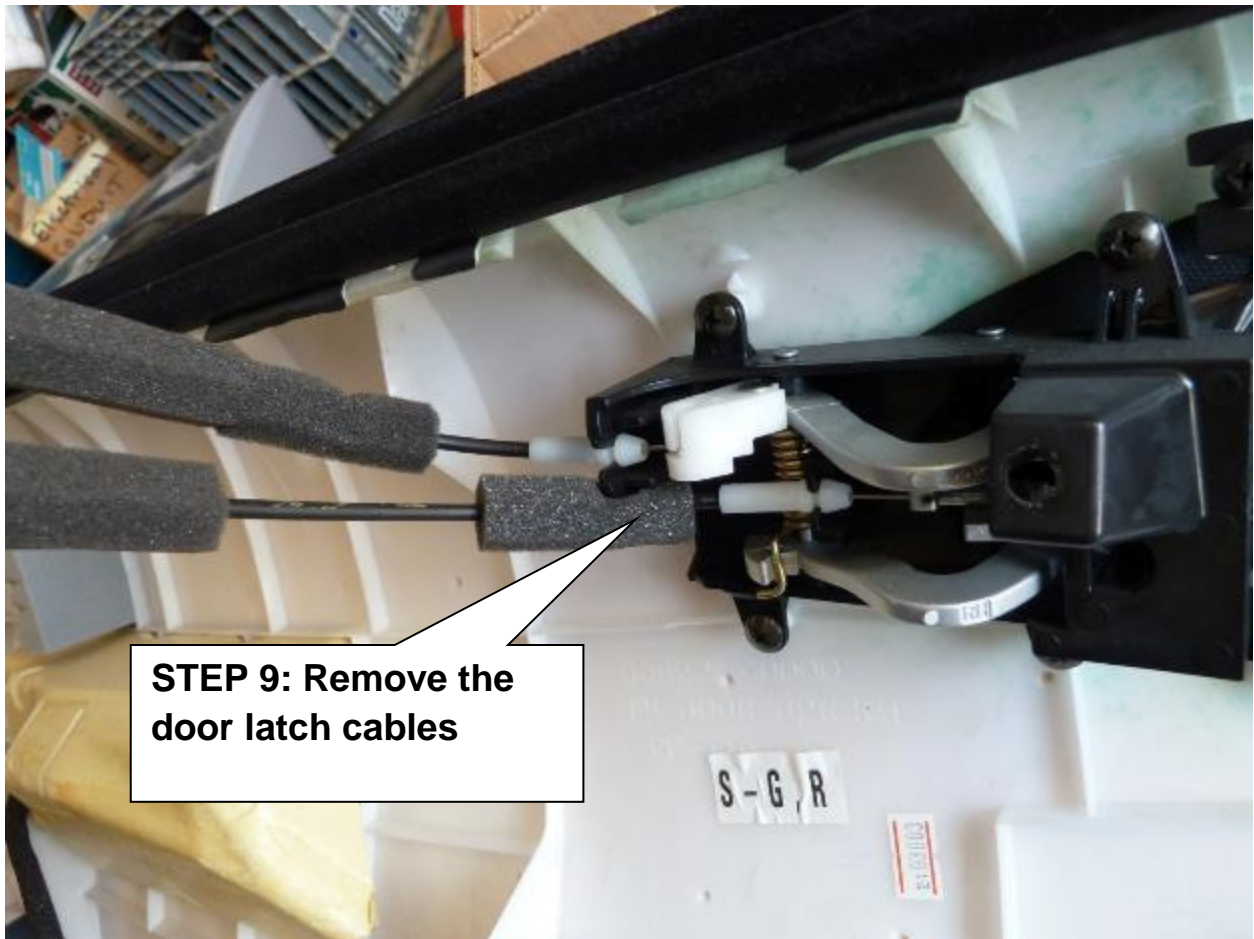
STEP 8: Door panel removed. Door latch cables still connected.

After you have removed the door panel, check the steel door and make sure none of the plastic trees stayed in the door. If they did, just remove them and reinstall into the door panel. The door panel will never reinstall correctly with the trees still stuck in the door.



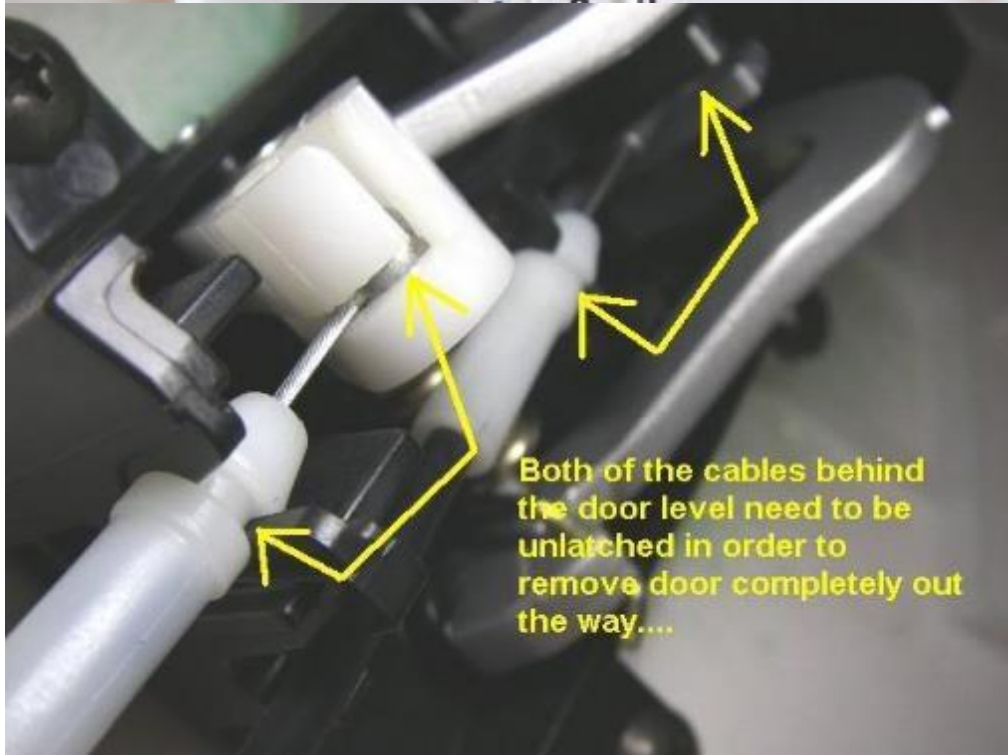
STEP 9: Remove the door latch cables.

After you have removed the door panel, check the steel door and make sure none of the plastic trees stayed in the door. If they did, just remove them and reinstall into the door panel. The door panel will never reinstall correctly with the trees still stuck in the door.

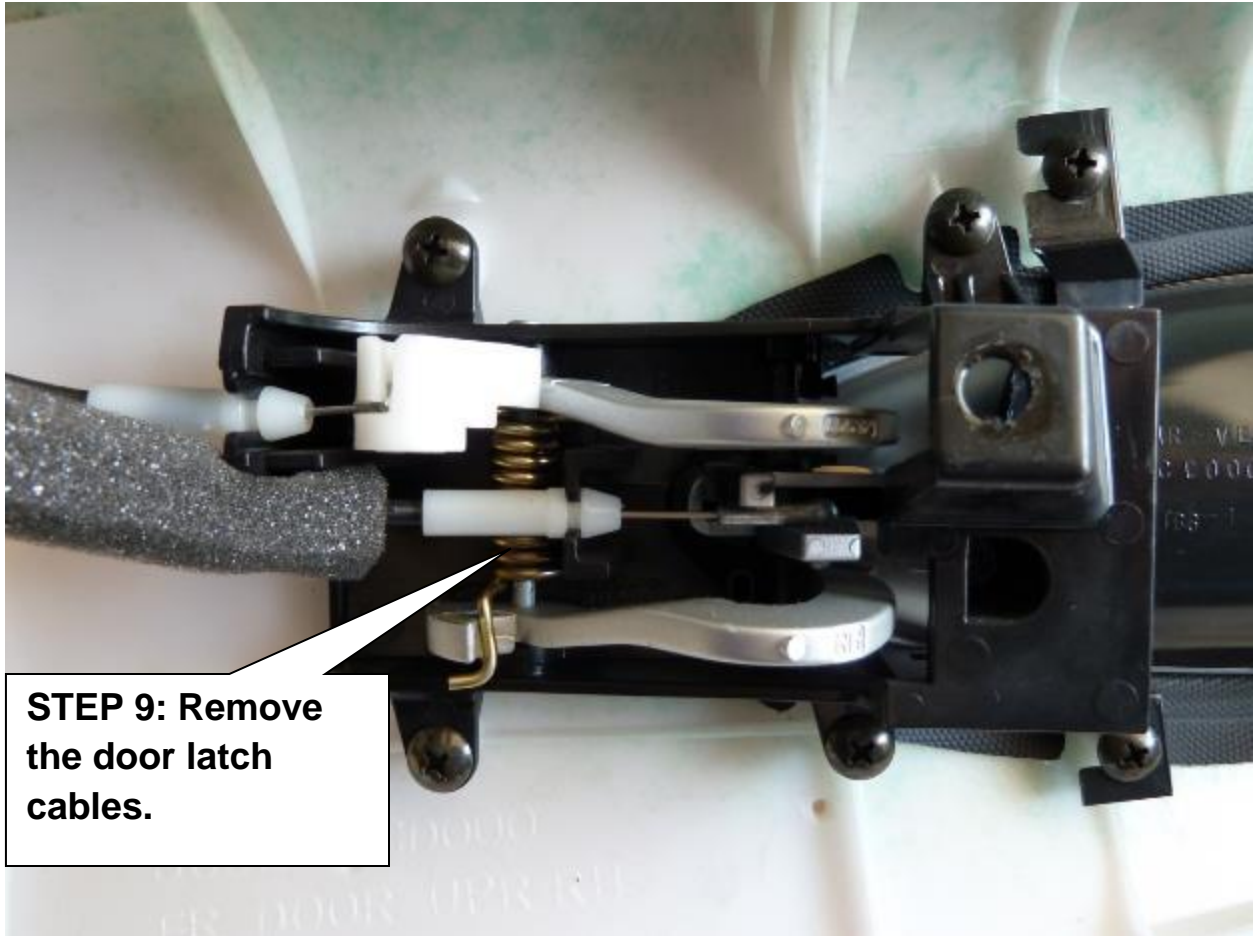




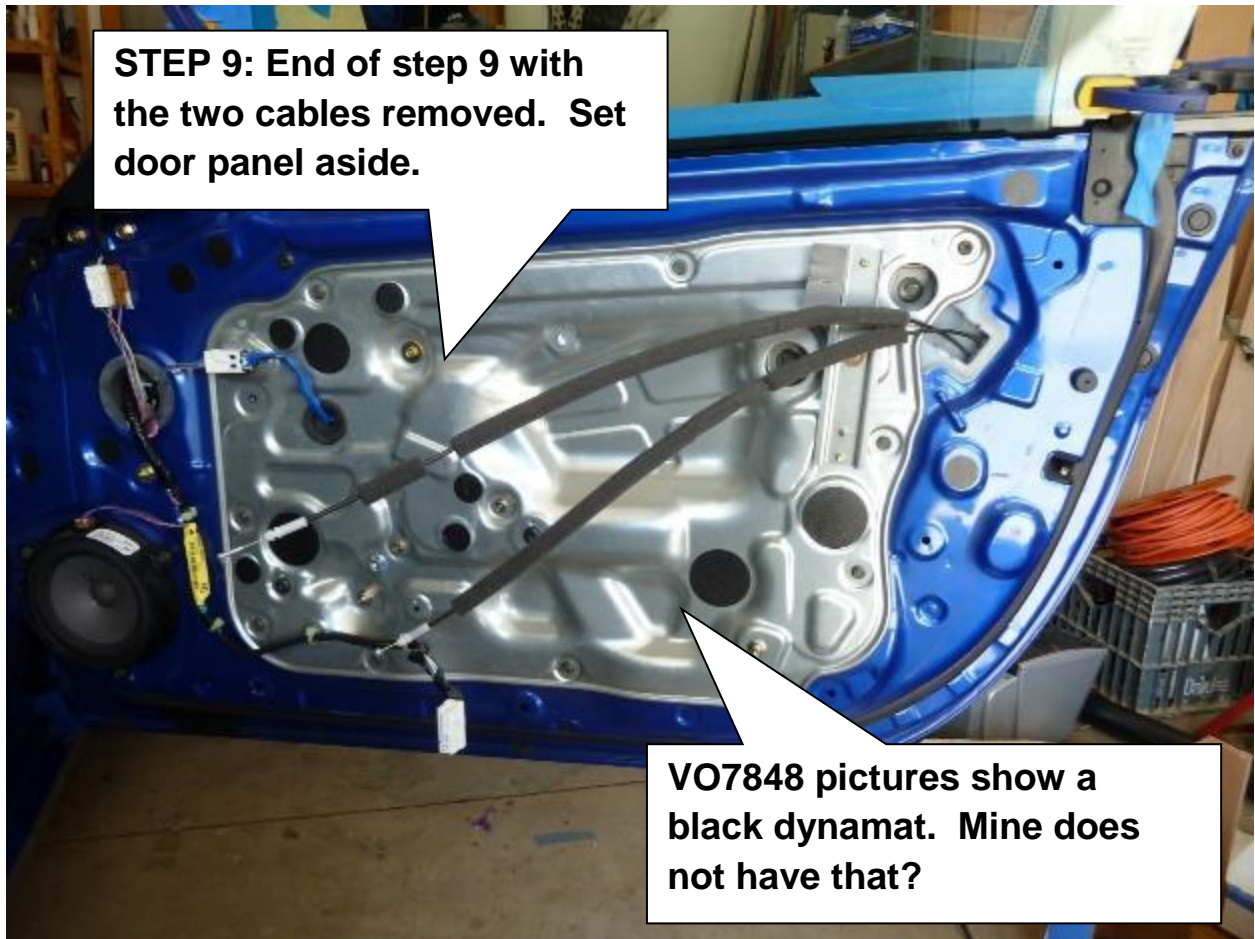
STEP 9: Remove the door latch cables.



Both of the cables behind the door level need to be unlatched in order to remove door completely out the way....



STEP 9: Remove the door latch cables.



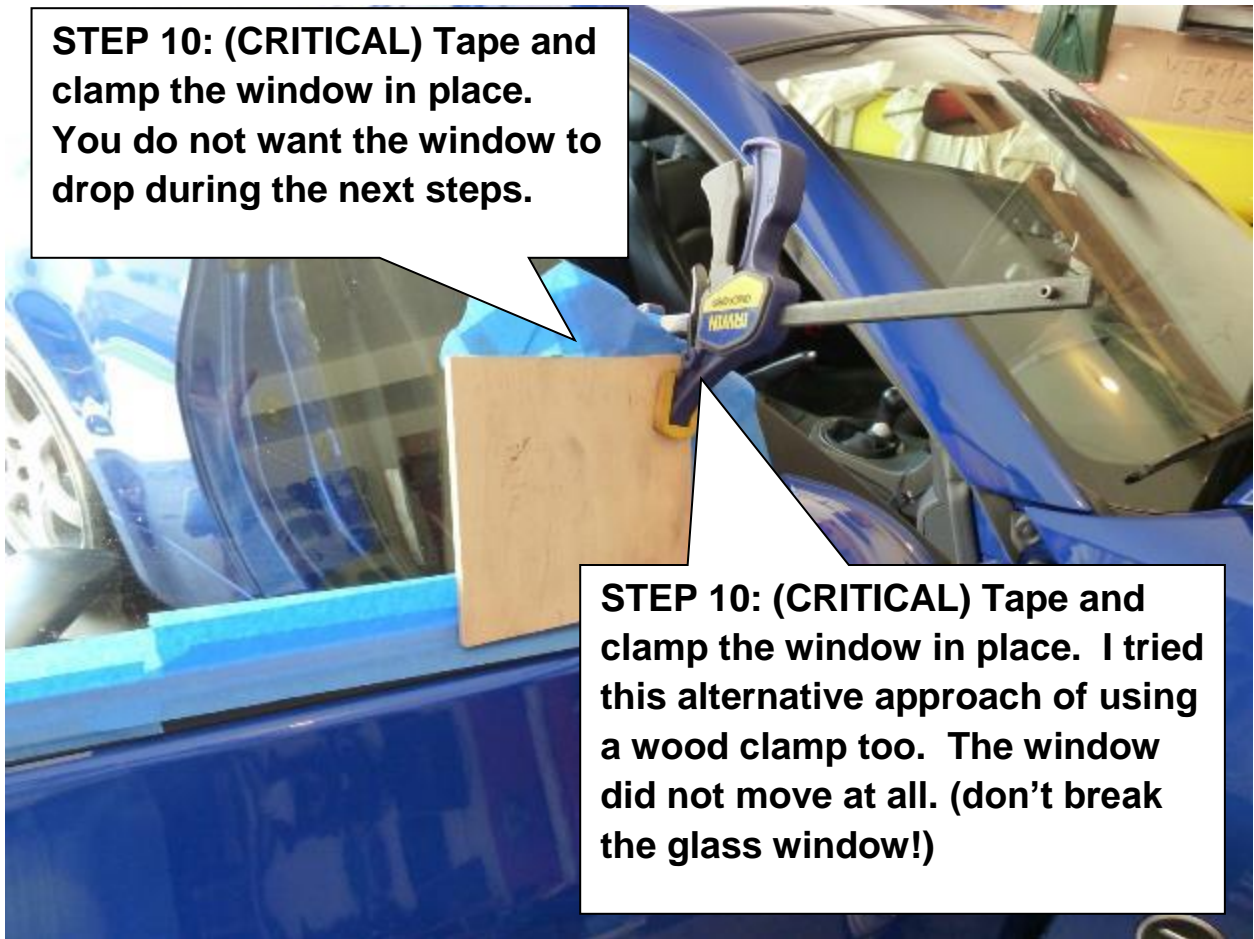
TAPE THE WINDOW UP IN THE FULLY UP POSITION. DO NOT ALLOW IT TO DROP WHEN THE STEEL PANEL IS REMOVED

STEP 10: (CRITICAL) Tape and clamp the window in place. You do not want the window to drop during the next steps. 1/8" drop will make the job a ton tougher!

This is the reason you duct tape the window. This is the lower front window track bolt. You can see when all 4 track bolts are unfastened, the window drops. Fortunately the duct tape only lets it drop 1/8 inch or so.



STEP 10: (CRITICAL) Tape and clamp the window in place. You do not want the window to drop during the next steps.



STEP 10: (CRITICAL) Tape and clamp the window in place. I tried this alternative approach of using a wood clamp too. The window did not move at all. (don't break the glass window!)

STEP 10: Sept 2014 comments, now I have read that if the window is in different positions then you do not need to tape it up. I've not read enough to know for sure if that will work. I do know what VO showed will work...

**STEP 10: (CRITICAL) Tape and clamp the window in place.
You do not want the window to drop during the next steps.**

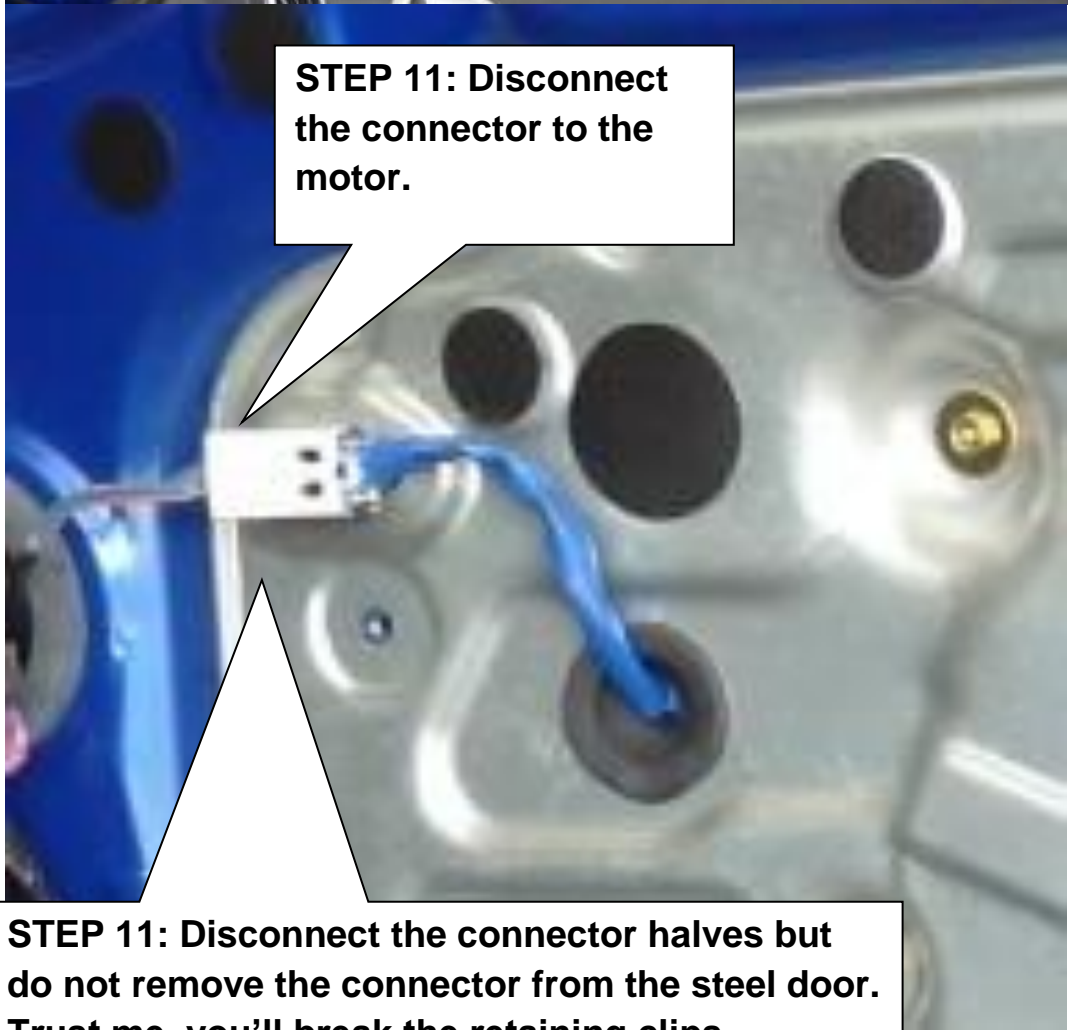


**STEP 10: (CRITICAL) Tape and clamp the window in place.
You do not want the window to drop during the next steps.**





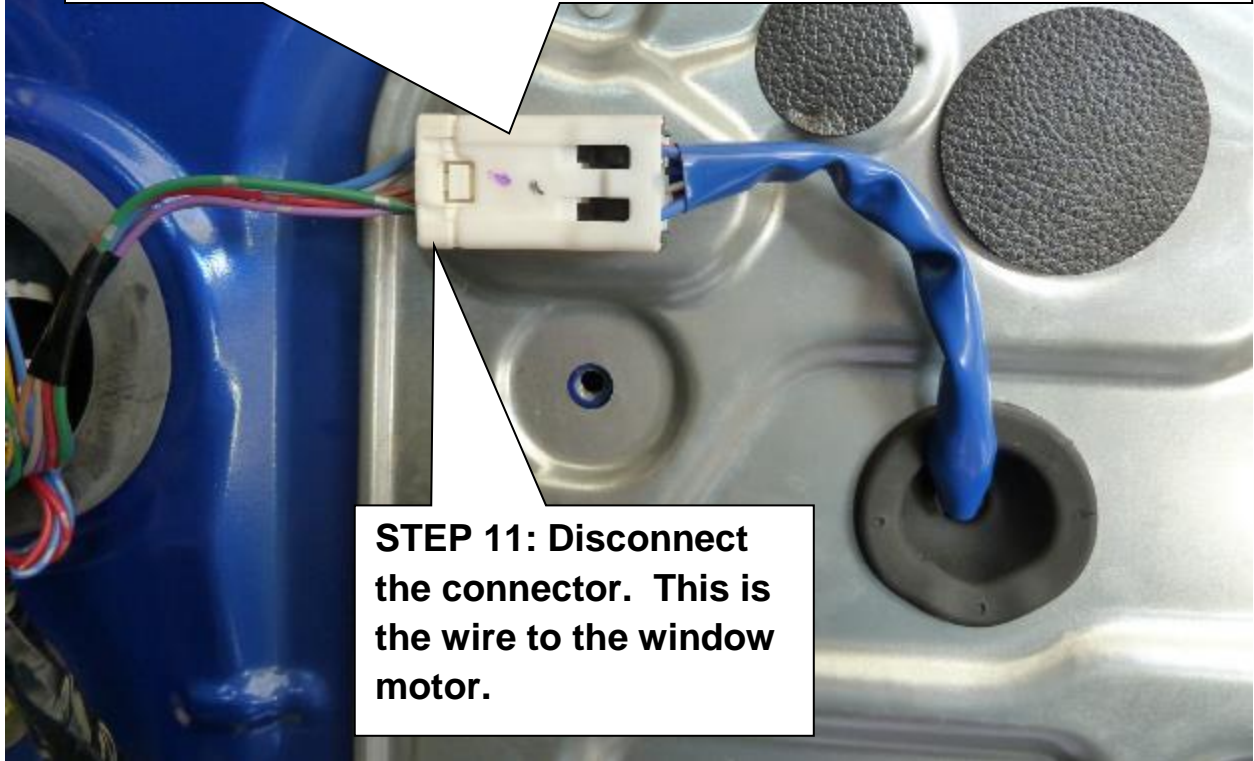
STEP 11: Disconnect the connector to the motor.



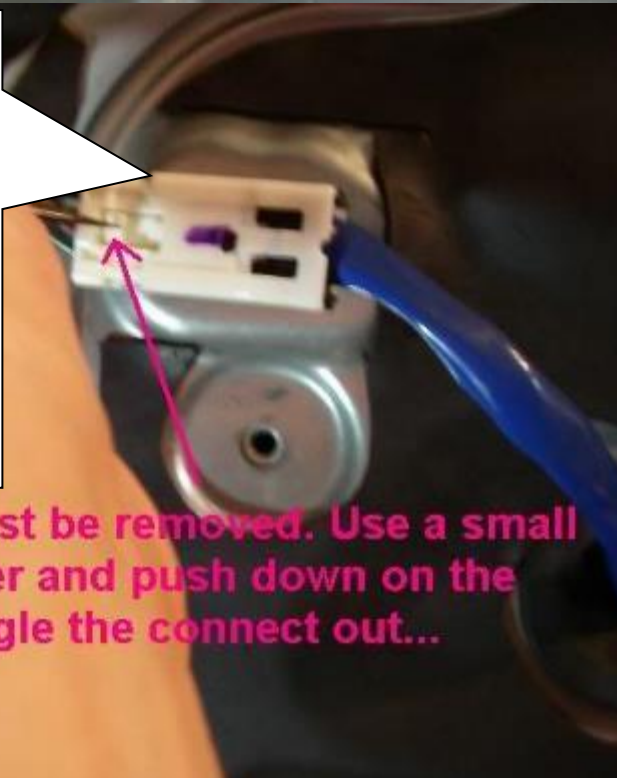
STEP 11: Disconnect the connector to the motor.

STEP 11: Disconnect the connector halves but do not remove the connector from the steel door. Trust me, you'll break the retaining clips

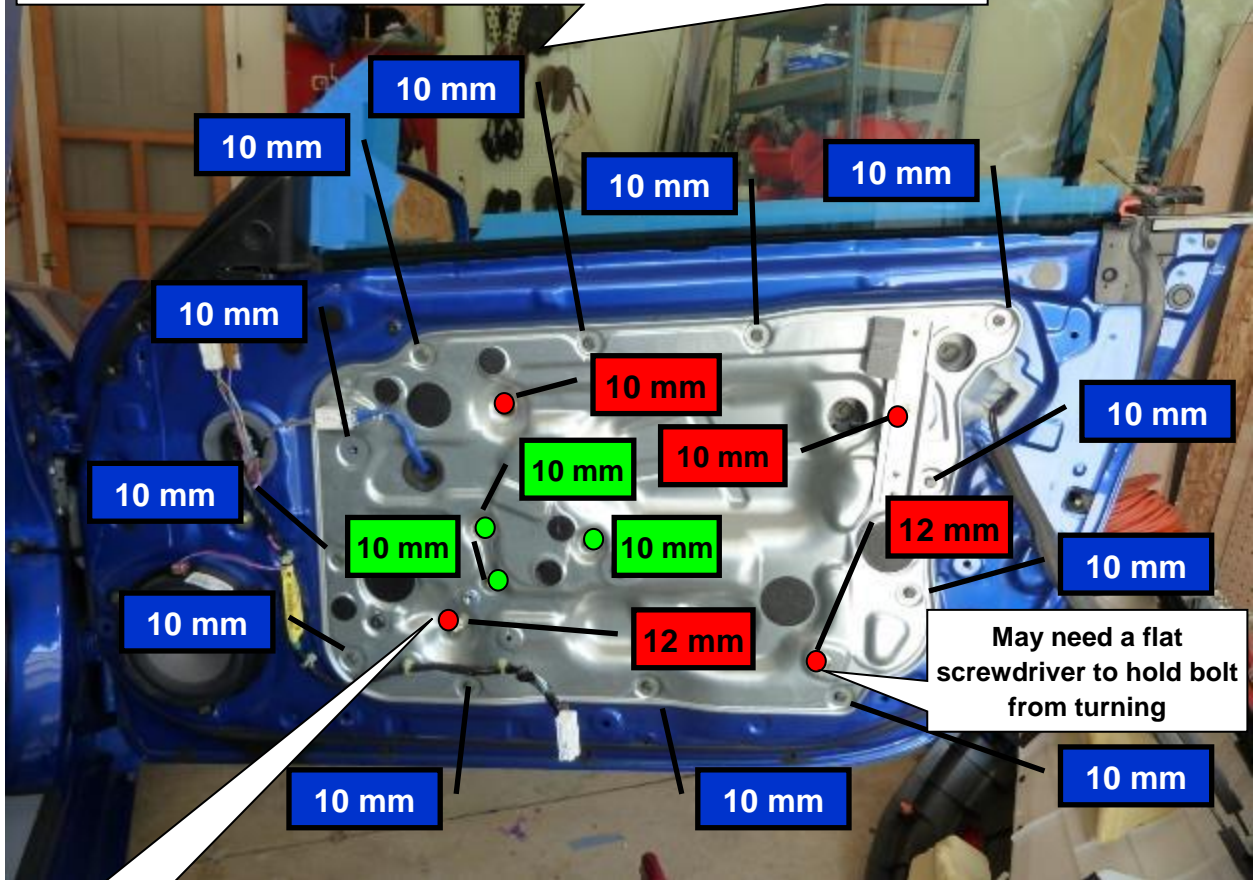
STEP 11: Disconnect the connector to the motor. You have to wait to remove the connector bracket from the steel door shell until after it is removed from the whole door frame.



STEP 11: Disconnect the connector to the motor. You have to wait to remove the connector bracket from the steel door shell until after it is removed from the whole door frame.



STEP 12: Remove BLUE, then RED, then GREEN.



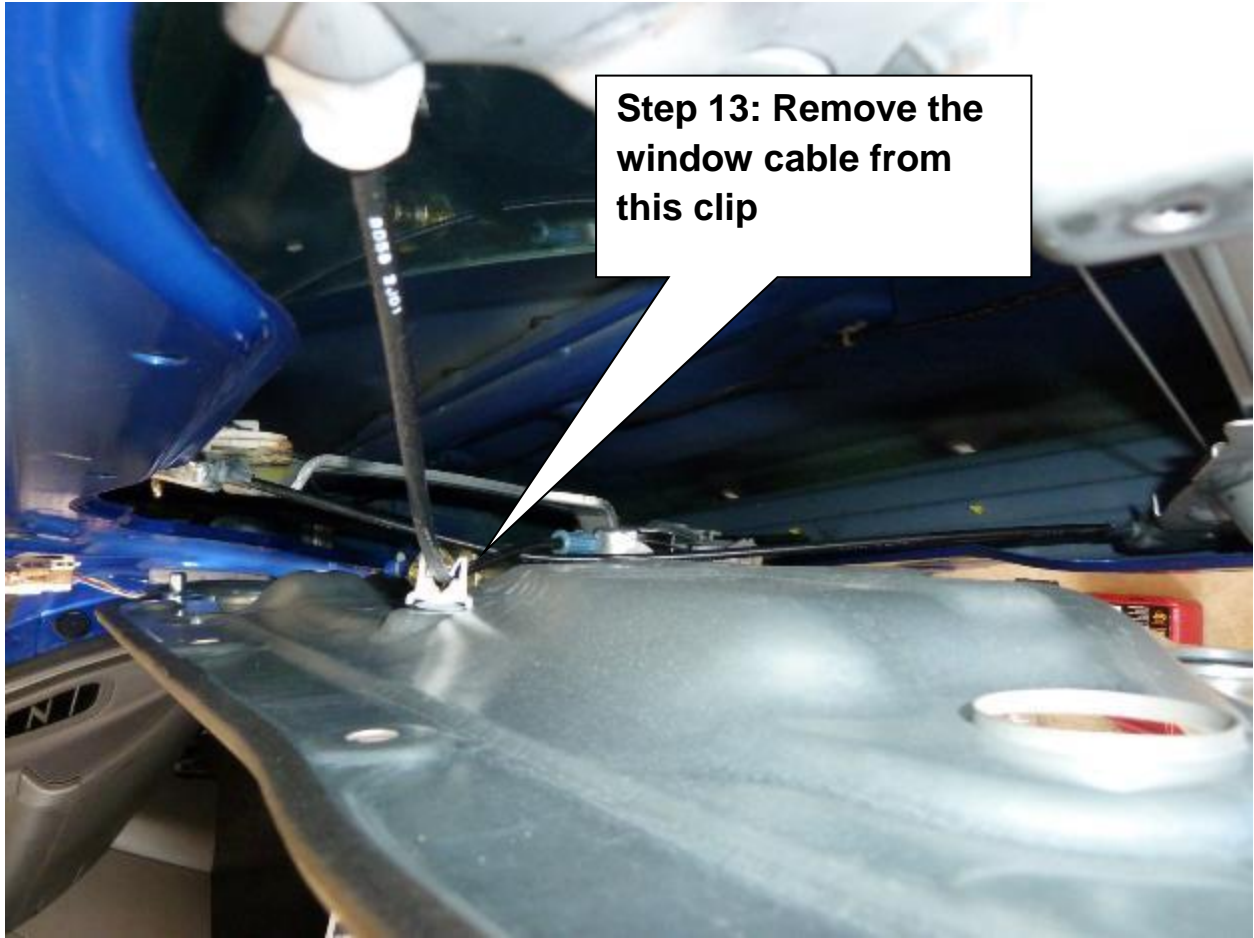
May need a flat screwdriver to hold bolt from turning

TAPE THE WINDOW UP IN THE FULLY UP POSITION. DO NOT ALLOW IT TO DROP WHEN THE STEEL PANEL IS REMOVED





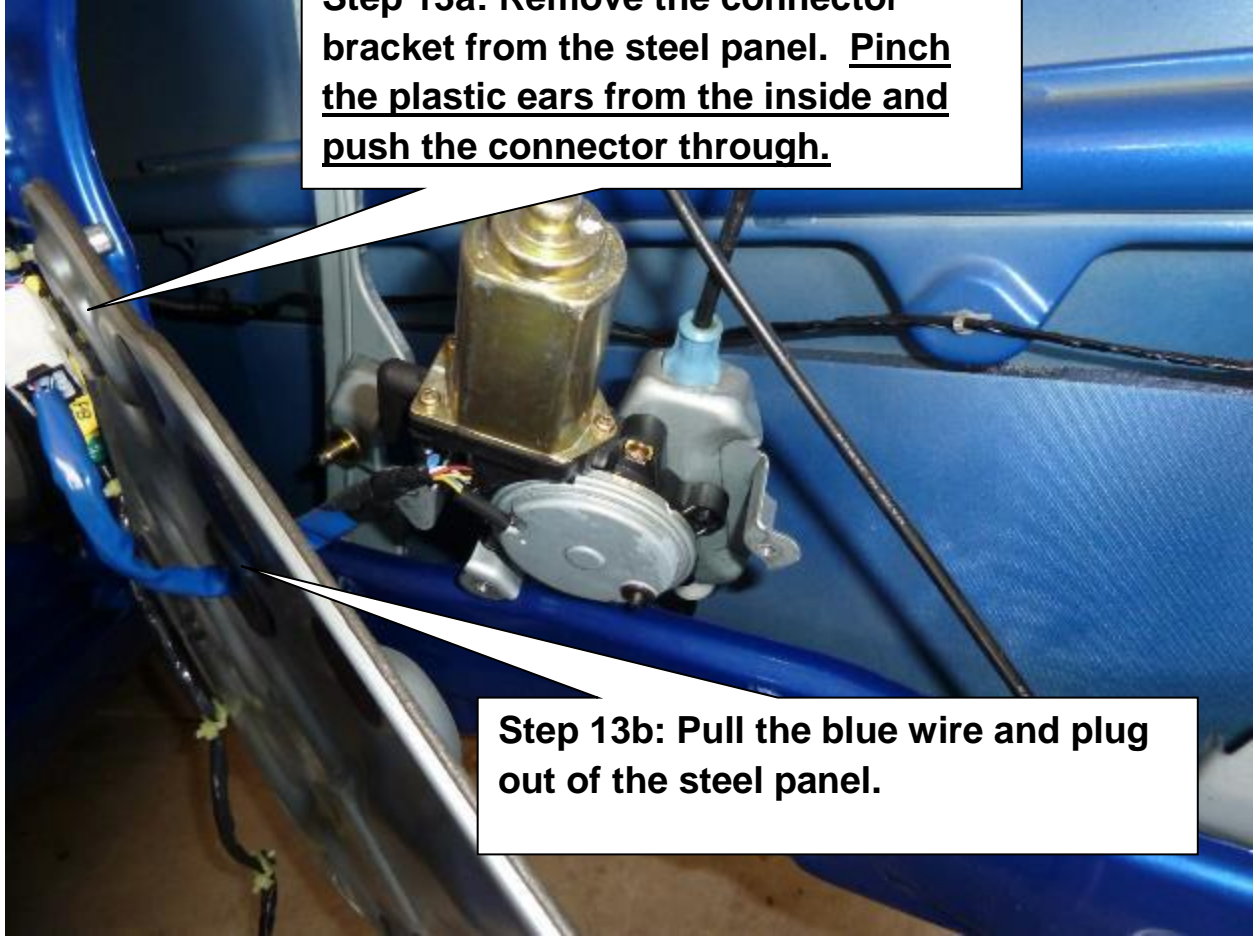






Step 13: Steel panel hanging down and ready for motor removal

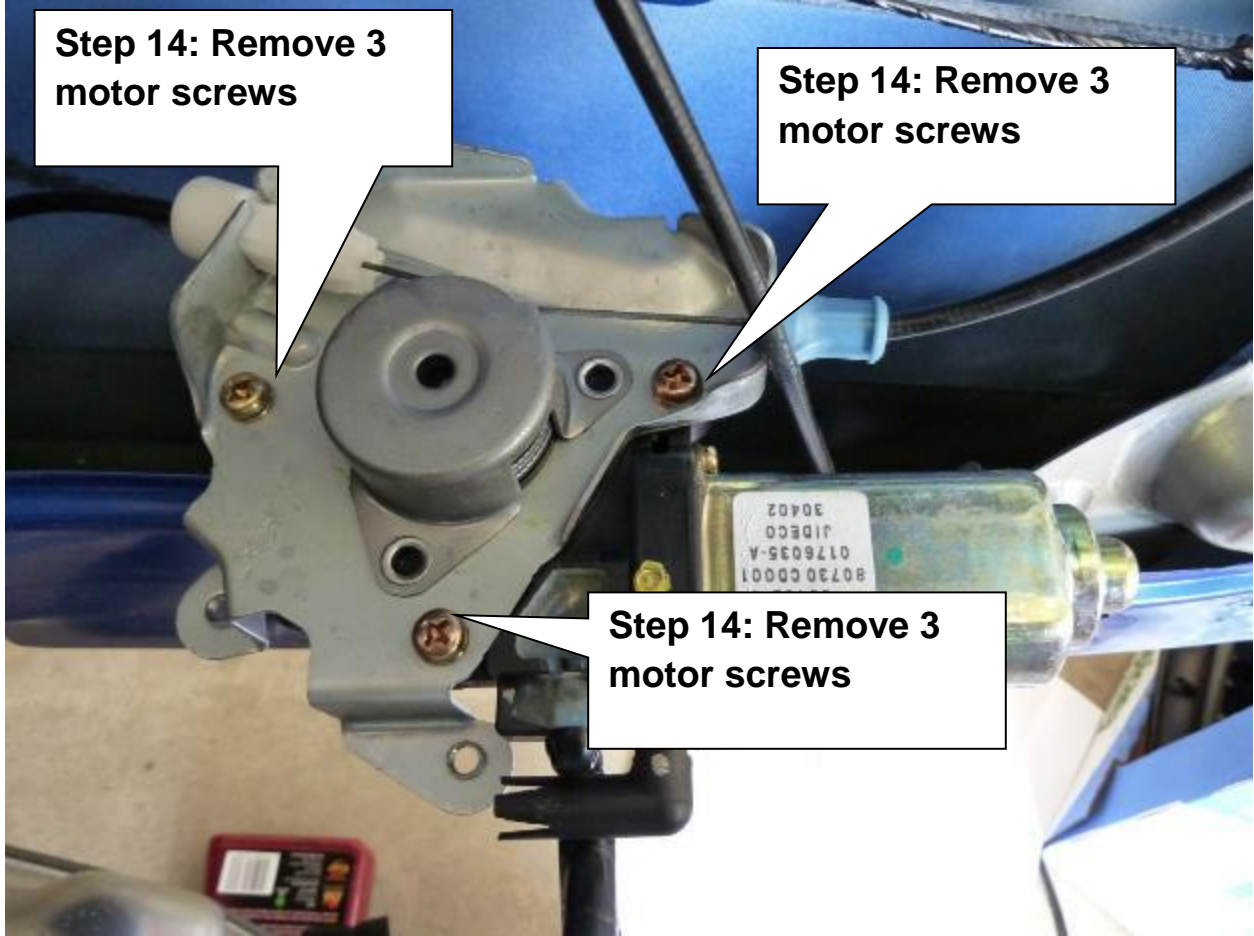
Step 13a: Remove the connector bracket from the steel panel. Pinch the plastic ears from the inside and push the connector through.



Step 13b: Pull the blue wire and plug out of the steel panel.



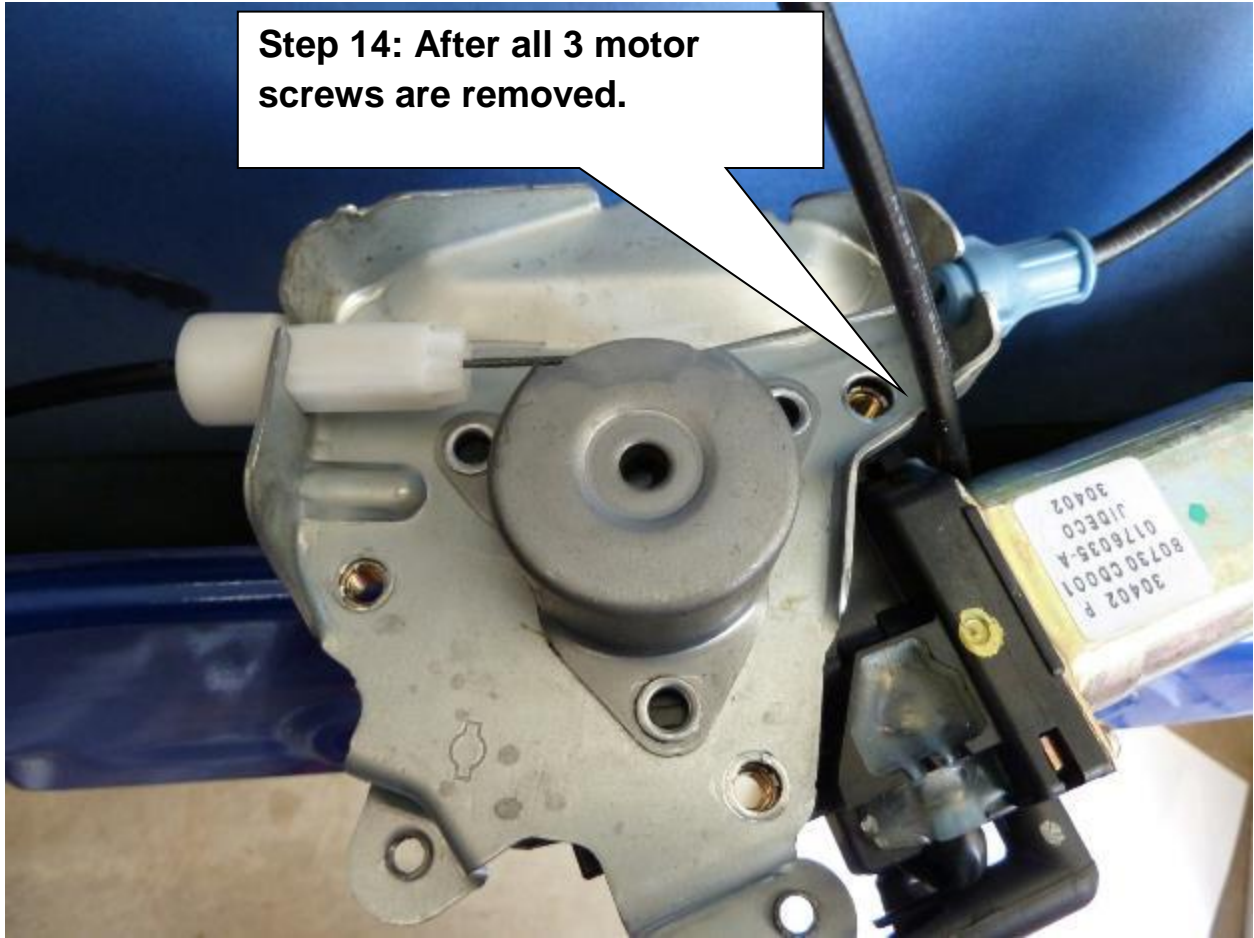








Step 14: After all 3 motor screws are removed.

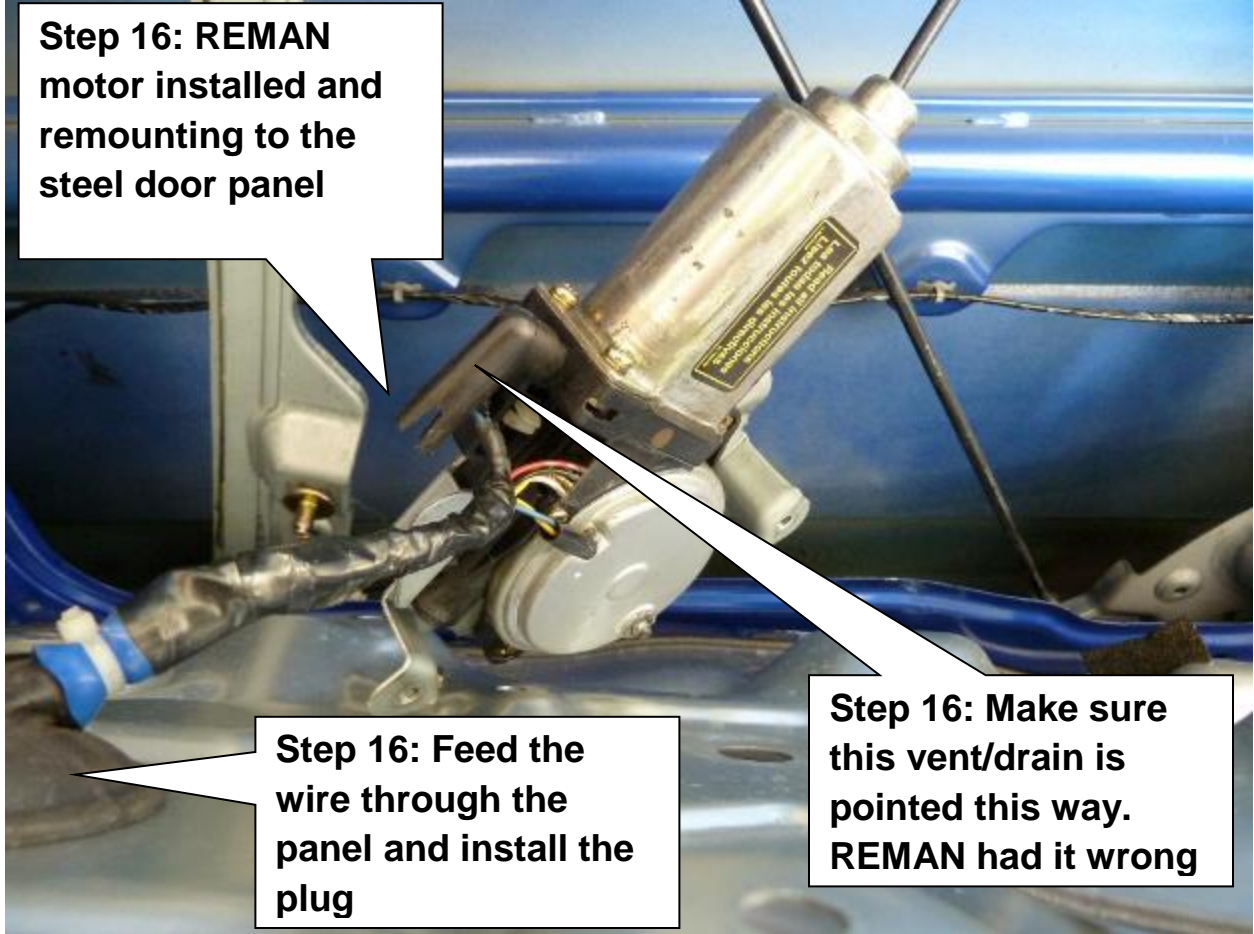


**Step 15: Unfasten
the rubber plug and
fully remove the
motor**



**THE PIECE OF
JUNK!**

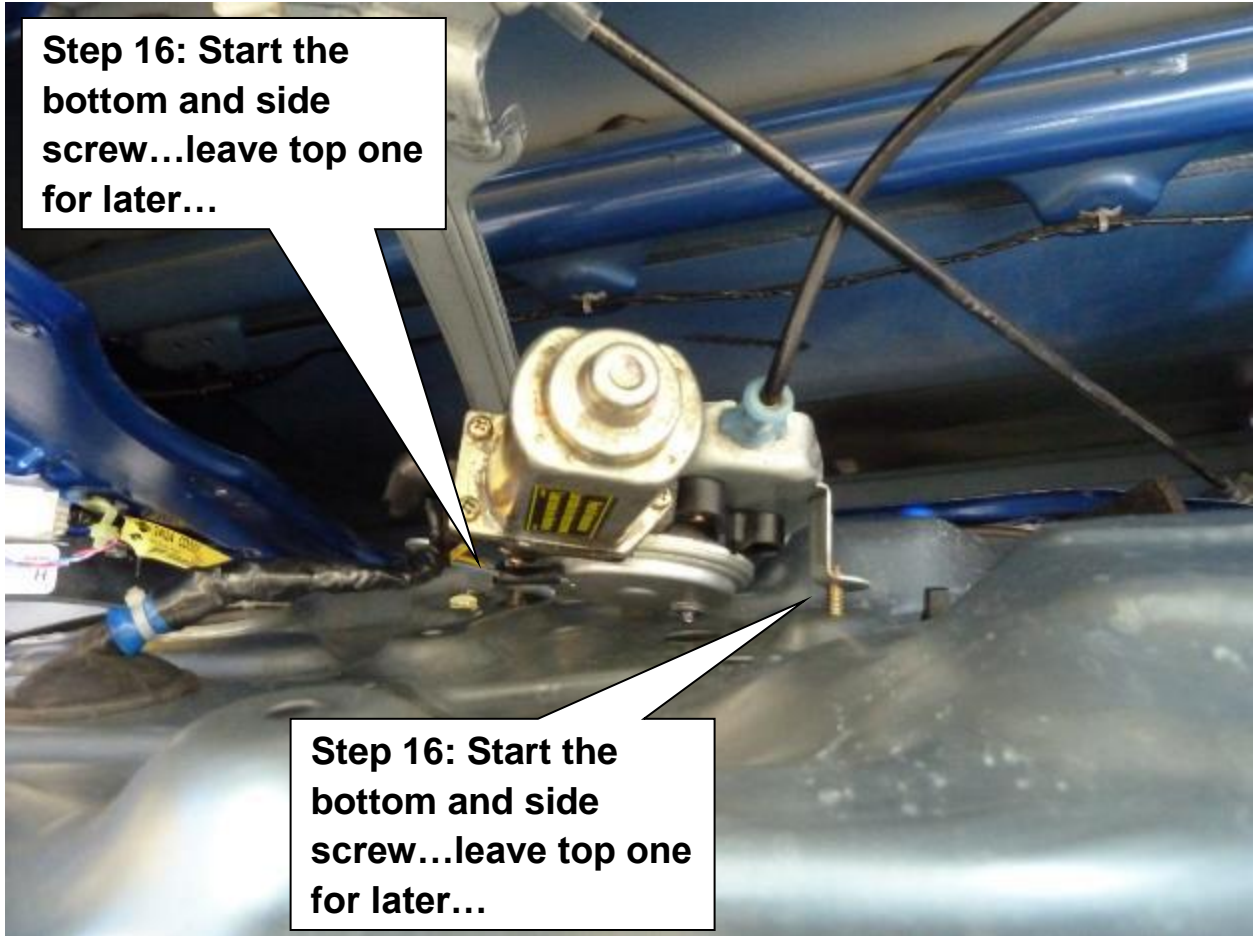


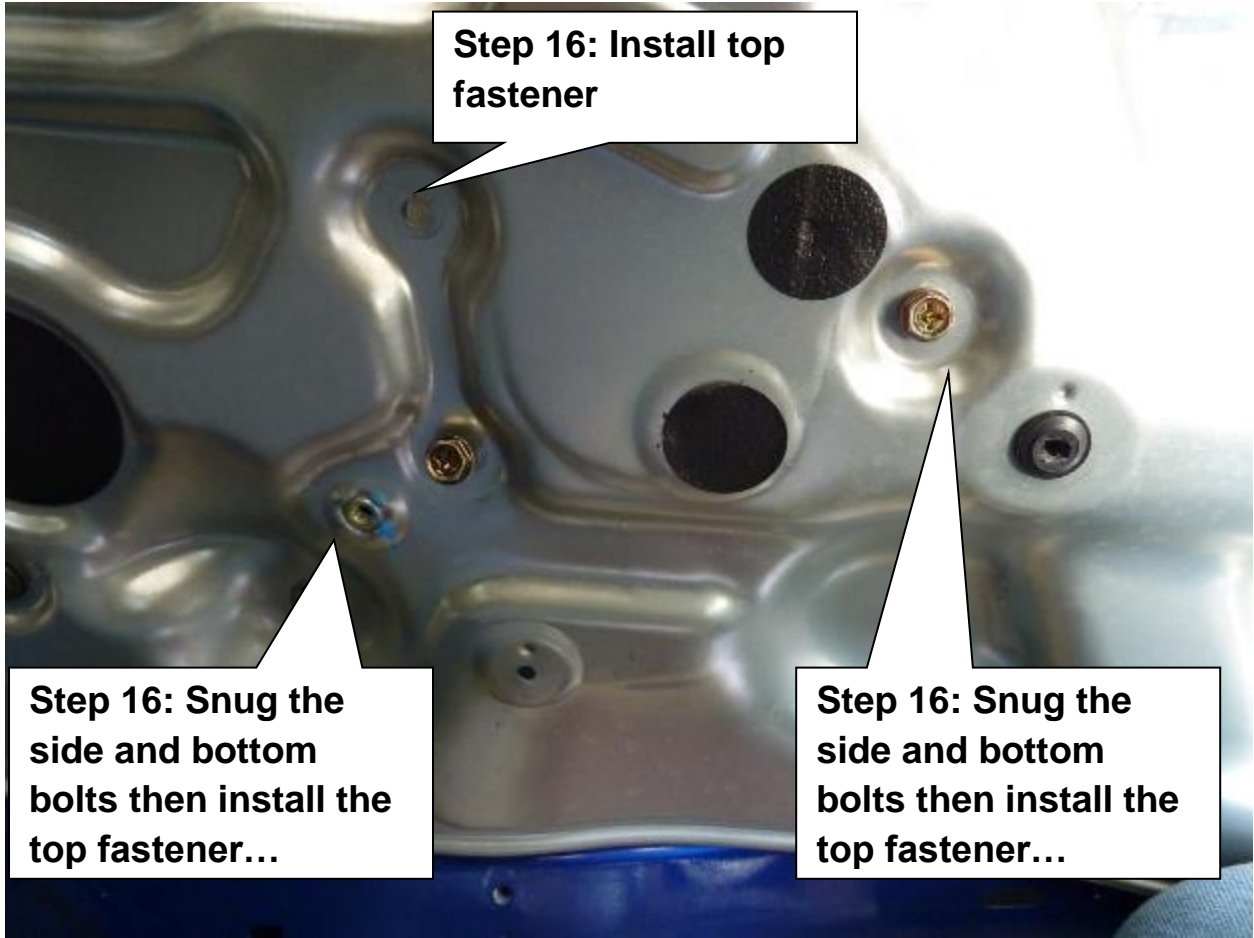


Step 16: REMAN motor installed and remounting to the steel door panel

Step 16: Feed the wire through the panel and install the plug

Step 16: Make sure this vent/drain is pointed this way. REMAN had it wrong





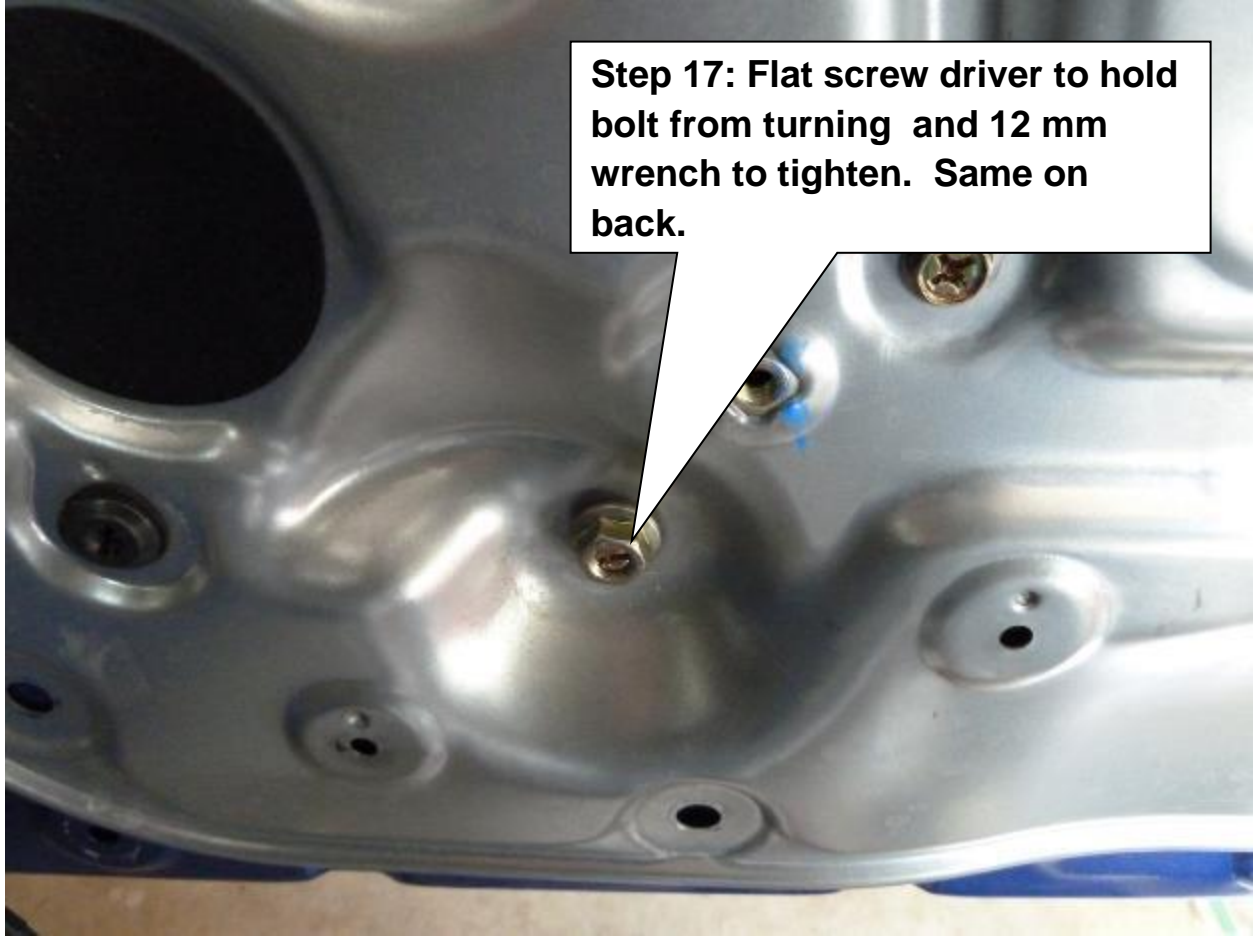
Step 16: Install top fastener

Step 16: Snug the side and bottom bolts then install the top fastener...

Step 16: Snug the side and bottom bolts then install the top fastener...







Step 17: Flat screw driver to hold bolt from turning and 12 mm wrench to tighten. Same on back.



Step 17: Flat screw driver to hold bolt from turning and 12 mm wrench to tighten. Same on front.

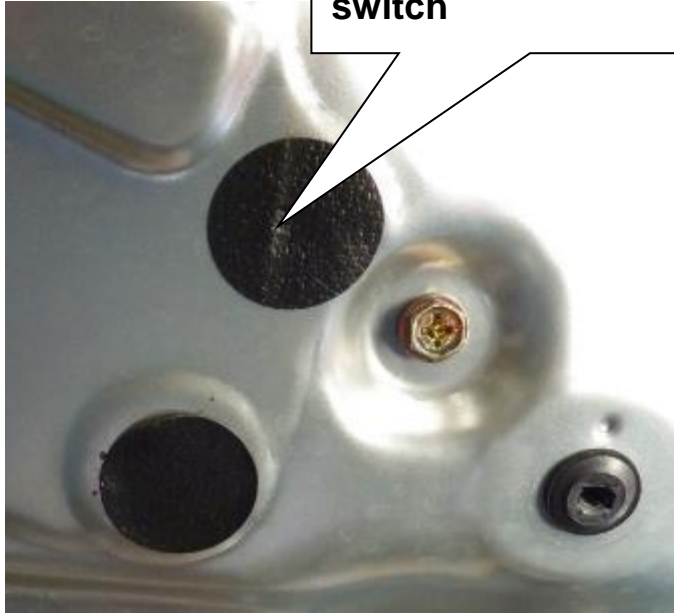


Only AFTER you have reinstalled all fasteners can you remove the clamps and tape on the window. **Do not install the final door panel until after you perform the motor reset procedure.**

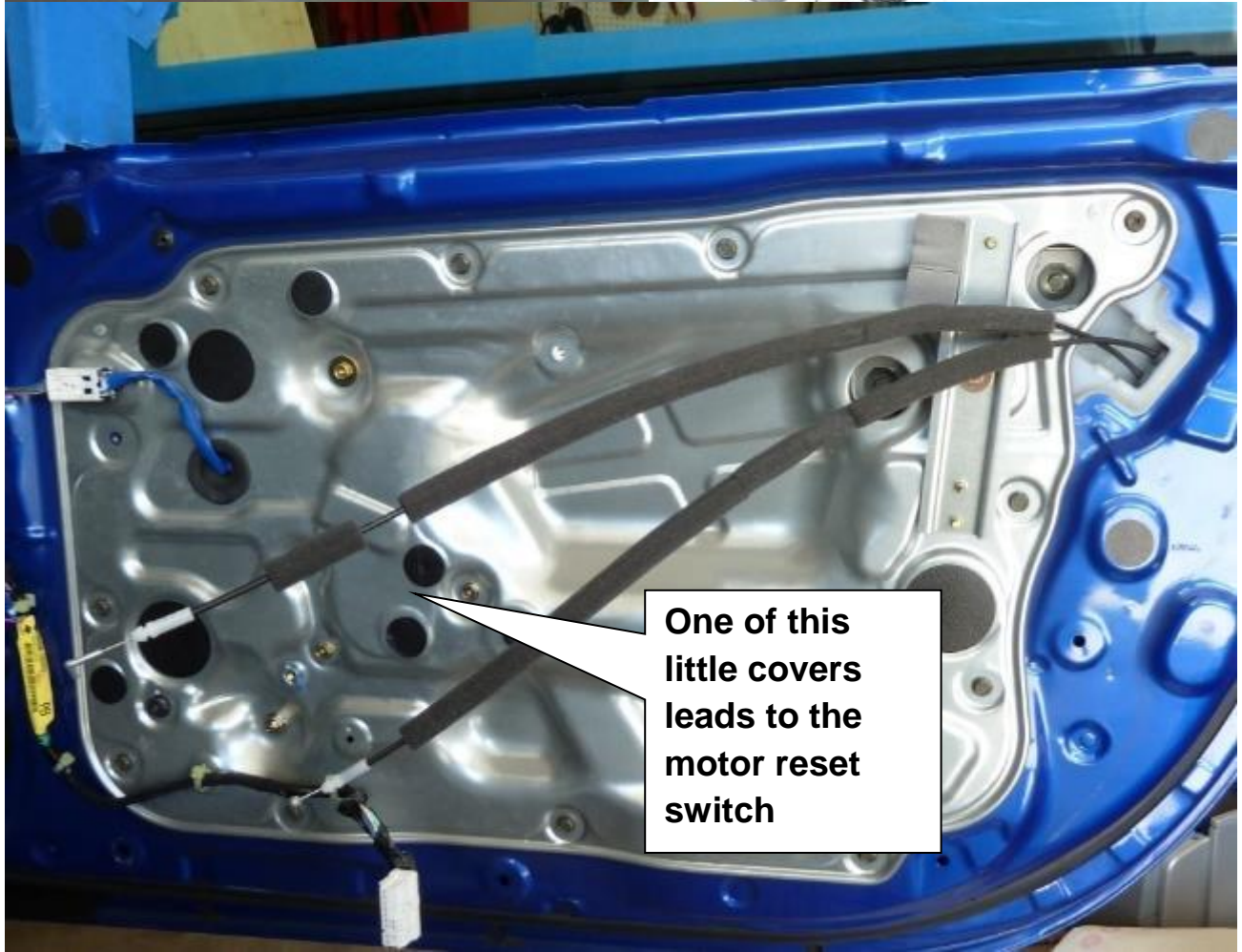
Again, remove tape only after you have reinstalled all fasteners. The tape cannot be on the window for the motor reset procedure.

Temporarily connect the window switch panel with the door panel removed...follow NISSANS instructions...

One of these little covers leads to the motor reset switch



Motor reset switch



One of this little covers leads to the motor reset switch

Only AFTER you have reinstalled all fasteners can you remove the clamps and tape on the window. Do not install the final door panel until after you perform the motor reset procedure.

Again, remove tape only after you have reinstalled all fasteners. The tape cannot be on the window for the motor reset procedure.

Temporarily connect the window switch panel with the door panel removed...follow NISSANS instructions...

WINDOW REGULATOR MOTOR RESET PROCEDURE

APPLIED VEHICLE: 2003-04 350Z (Z33)

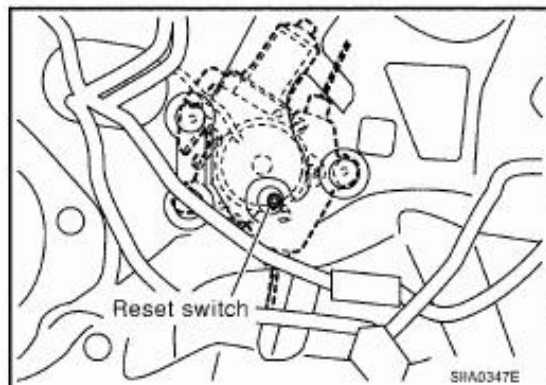
SERVICE INFORMATION

If any of the below work items were performed, the Window Regulator Motor must be reset. To reset the Motor, refer to the Service Procedure below.

- Removal and installation of the Window Regulator.
- Removal and installation of the Motor from the Window Regulator.
- Operating the Window Regulator outside of the vehicle.
- Removal and installation of the Window Glass.

SERVICE PROCEDURE

1. Remove the Door Panel.
 - Refer to the applicable Service Manual for Door Panel removal instructions
2. With the door open, lift UP and HOLD the Window Switch until the Window is fully closed.
 - Do not use the Window auto-closing function
 - Do not release the Switch before the Window is fully closed
3. Get inside the vehicle and close the door.
 - You need to close the door so the Door Switch is fully depressed
4. Press and HOLD the Window Regulator Motor Reset Switch. While holding the Reset Switch, press DOWN and HOLD the Window Switch until the Window is fully opened.
 - Do not use the Window auto-opening function
 - Do not release the Switch before the Window is fully opened



5. Release the Reset Switch. Then, lift UP and HOLD the Window Switch until the Window is fully closed.
 - Do not use the Window auto-closing function
 - Do not release the Switch before the Window is fully closed
6. Open the Door to release the Door Switch. The Window Glass should partially move down.
7. Re-install the Door Panel.





It's done!