

- 4. Merge onto **I-75 S** via the ramp to **Knoxville** 162 mi
Entering Tennessee
- 5. Slight **left** at **I-275 S** 0.4 mi
- 6. Take exit **3** to merge onto **I-640 E** toward **Asheville** 6.9 mi
- 7. Continue onto **US-25W S** (signs for **I-40 E/ Asheville**) 0.6 mi
- 8. Merge onto **I-40 E** 13.9 mi
- 9. Take exit **407** toward **Winfield Dunn Pkwy** 0.3 mi
- 10. Turn **right** at **Winfield Dunn Pkwy** 8.5 mi
- 11. Continue onto **Forks of the River Pkwy/ US-441 Scenic S** 0.6 mi
- 12. Turn **right** at **Parkway/TN-71 S/TN-71 Scenic S/US-441 S/US-441 Scenic S** 11.4 mi
Continue to follow Parkway/TN-71 S/TN-71 Scenic S/US-441 S
- 13. Exit onto **Gatlinburg Pkwy Bypass/ Parkway Bypass/U.S. 441 Bypass Scn S** 3.6 mi
- 14. Continue onto **TN-71 N/US-441 N** 5.1 mi
- 15. Turn **left** at **TN-71 S/US-441 S** 27.6 mi
Continue to follow US-441 S
Entering North Carolina
- 16. Turn **right** at **US-19 S/US-441 S** 0.5 mi
- 17. Take the 1st **left** onto **US-441 S** 4.9 mi
- 18. Take the ramp onto **Great Smoky Mountains Expy/US-74 W** 15.1 mi
Continue to follow US-74 W
- 19. Turn **right** at **N Carolina 28 N** 20.1 mi
- 20. Turn **left** at **Bee Cove Rd/County Rd 1263** 0.2 mi

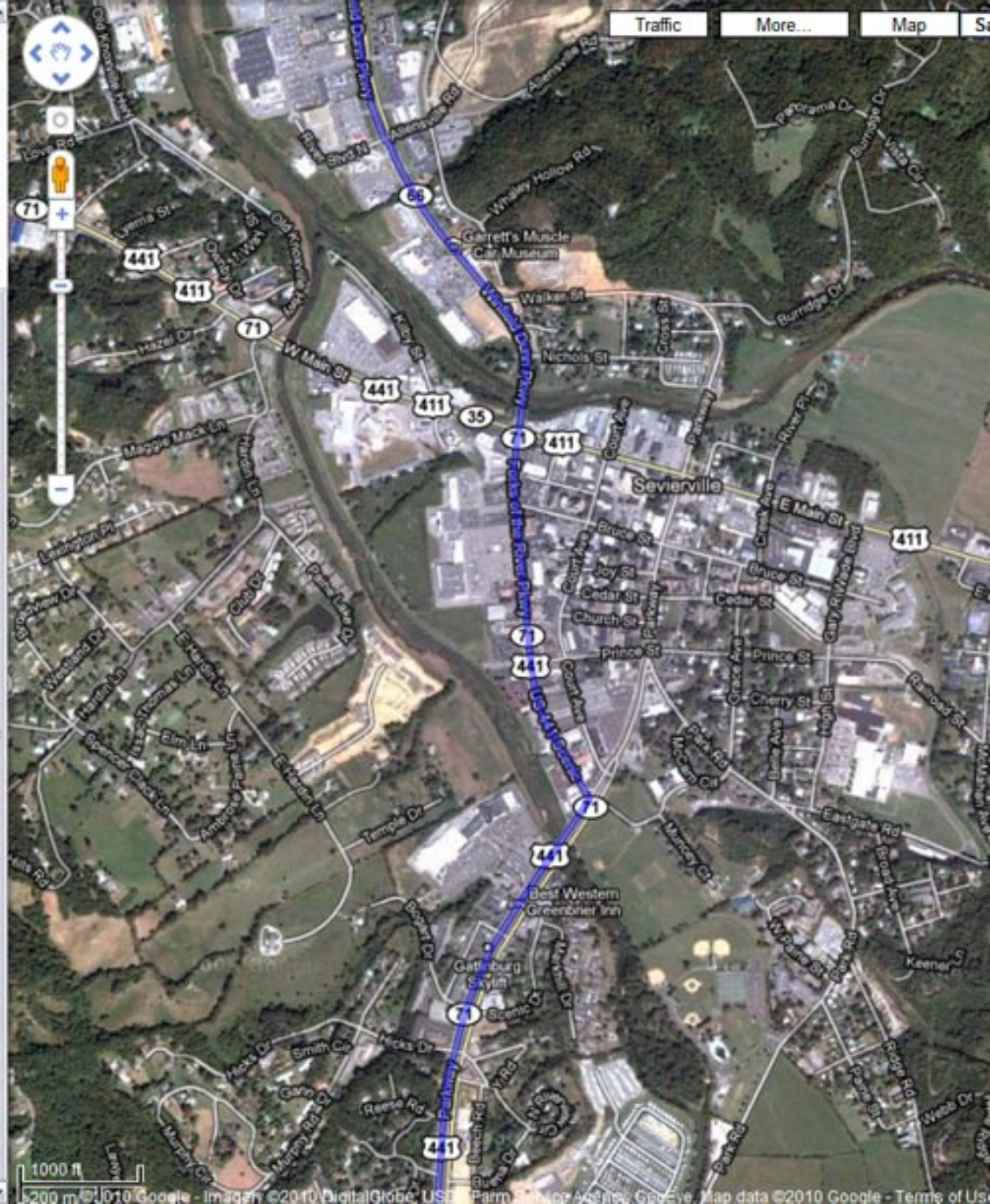
Fontana Village Resort
NC 28733

[Save to My Maps](#)

These directions are for planning purposes only. You may find that construction projects, traffic, weather, or other events may cause conditions to differ from the map results, and you should plan your route accordingly. You must obey all signs or notices regarding your route.

Map data ©2010 Google

[Report a problem](#)



1000 ft