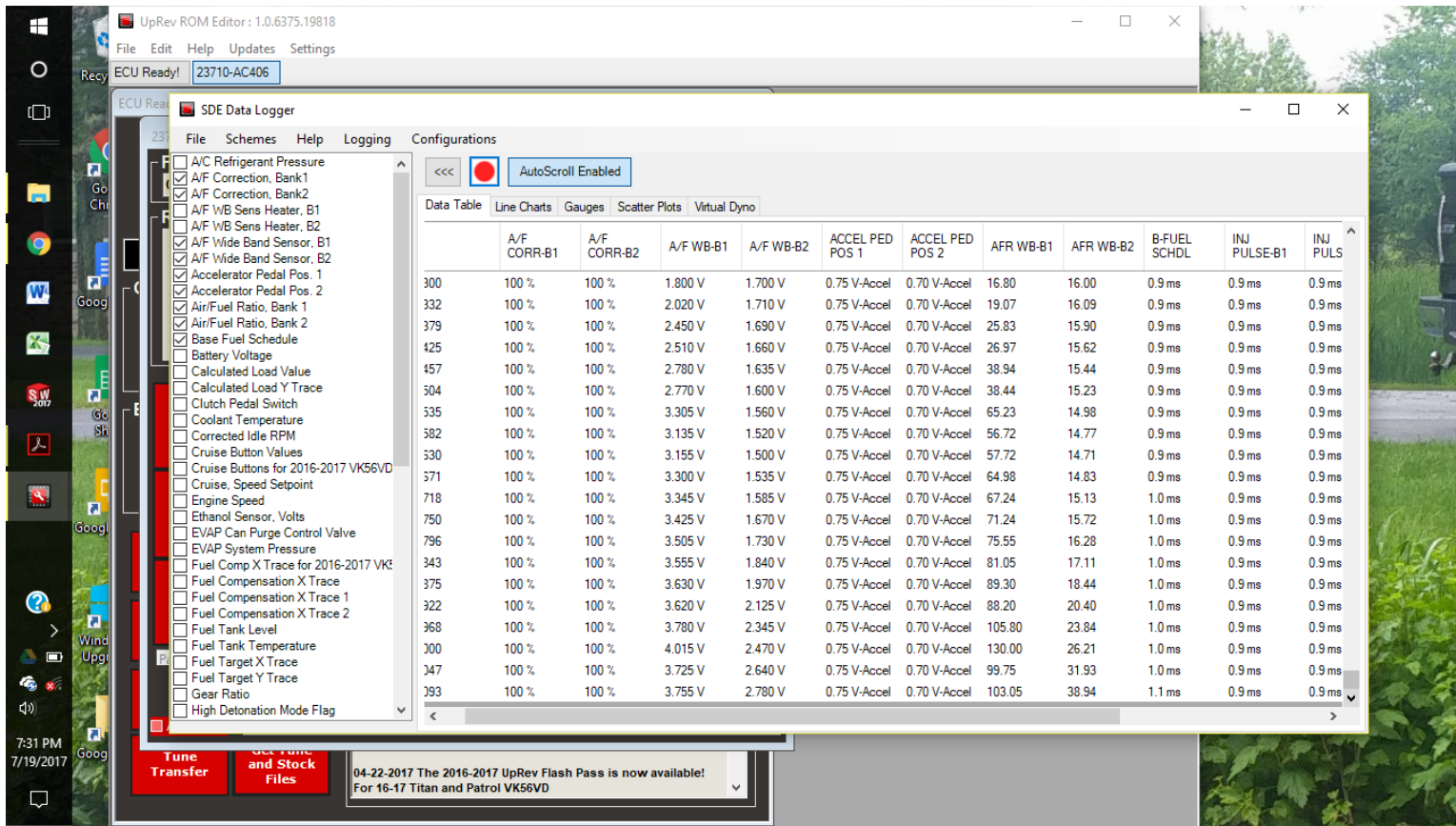


Below Screenshot is logs from kvalue leaned out by 0.85 and maf table increased by (1/0.85), from my tune



Below Log is from my original set K value, and maf values tuned using djamps tool (and simply looking at the logs and adjusting manually)

ECU Realtime SDE Data Logger

File Schemes Help Logging Configurations

AutoScroll Enabled

Data Table Line Charts Gauges Scatter Plots Virtual Dyno

Time	A/F CORR-B1	A/F CORR-B2	A/F WB-B1	A/F WB-B2	ACCEL PED POS 1	ACCEL PED POS 2	AFR WB-B1	AFR WB-B2	B-FUEL SCHDL	INJ PULSE-B1	INJ PULSE-B2
53.005	125 %	104 %	3.505 V	1.600 V	0.75 V-Accel	0.70 V-Accel	75.55	15.23	0.9 ms	1.5 ms	1.4 ms
53.052	125 %	109 %	3.400 V	1.905 V	0.75 V-Accel	0.70 V-Accel	69.99	17.68	0.9 ms	1.5 ms	1.4 ms
53.099	125 %	113 %	2.980 V	2.170 V	0.75 V-Accel	0.70 V-Accel	48.96	20.97	0.9 ms	1.5 ms	1.4 ms
53.130	125 %	118 %	3.245 V	2.430 V	0.75 V-Accel	0.70 V-Accel	62.23	25.45	0.9 ms	1.5 ms	1.5 ms
53.177	125 %	125 %	3.680 V	2.630 V	0.75 V-Accel	0.70 V-Accel	94.80	31.43	0.8 ms	1.5 ms	1.5 ms
53.208	100 %	100 %	3.160 V	2.870 V	0.75 V-Accel	0.70 V-Accel	57.97	43.45	0.8 ms	0.9 ms	0.9 ms
53.255	100 %	100 %	3.785 V	2.925 V	0.75 V-Accel	0.70 V-Accel	106.35	46.20	0.9 ms	0.9 ms	0.9 ms
53.302	100 %	100 %	3.275 V	3.060 V	0.75 V-Accel	0.70 V-Accel	63.73	52.96	0.9 ms	0.9 ms	0.9 ms
53.333	100 %	100 %	3.750 V	3.105 V	0.75 V-Accel	0.70 V-Accel	102.50	55.22	0.9 ms	0.9 ms	0.9 ms
53.380	100 %	100 %	3.675 V	3.115 V	0.75 V-Accel	0.70 V-Accel	94.25	55.72	0.9 ms	0.9 ms	0.9 ms
53.427	100 %	100 %	3.945 V	3.150 V	0.75 V-Accel	0.70 V-Accel	123.95	57.47	0.9 ms	0.9 ms	0.9 ms
53.474	100 %	100 %	3.230 V	3.210 V	0.75 V-Accel	0.70 V-Accel	100.30	60.48	0.9 ms	0.9 ms	0.9 ms
53.505	100 %	100 %	3.590 V	3.270 V	0.75 V-Accel	0.70 V-Accel	84.90	63.48	1.0 ms	0.9 ms	0.9 ms
53.560	100 %	100 %	3.625 V	3.320 V	0.75 V-Accel	0.70 V-Accel	88.75	65.98	1.0 ms	0.9 ms	0.9 ms
53.598	100 %	100 %	3.670 V	3.335 V	0.75 V-Accel	0.70 V-Accel	93.70	66.74	1.0 ms	0.9 ms	0.9 ms
53.629	100 %	100 %	3.745 V	3.310 V	0.75 V-Accel	0.70 V-Accel	101.95	65.48	1.0 ms	0.9 ms	0.9 ms
53.676	100 %	100 %	3.760 V	3.375 V	0.75 V-Accel	0.70 V-Accel	103.60	68.74	1.0 ms	0.9 ms	0.9 ms
53.724	100 %	100 %	3.755 V	3.420 V	0.75 V-Accel	0.70 V-Accel	103.05	70.99	1.0 ms	0.9 ms	0.9 ms
53.759	100 %	100 %	3.915 V	3.440 V	0.75 V-Accel	0.70 V-Accel	120.65	71.99	1.0 ms	0.9 ms	0.9 ms
53.806	100 %	100 %	4.145 V	3.490 V	0.75 V-Accel	0.70 V-Accel	130.00	74.50	1.0 ms	0.9 ms	0.9 ms

Microsoft Excel

Clipboard Font Alignment Number Styles Cells Editing

	A	B	C	D	E	F	G	H	I	J	K	L	M	N	O	P	Q	R	S
1134	47390	117	121	1.565	1.46	1.05	0.99	15.01	14.59	1.7	2	2.1	1.61	14.7	0.77				
1135	47436	120	120	1.605	1.455	1.05	0.99	15.26	14.58	1.6	2	2.1	1.61	14.7	0.77				
1136								15.38	14.56	1.6	2.1	2	1.59	14.7	0.77				
1137								15.72	14.52	1.6	2.1	2	1.62	14.7	0.77				
1138								15.53	14.49	1.6	2.1	2	1.64	14.7	0.77				
1139								15.62	14.46	1.6	2.1	2	1.62	14.7	0.77				
1140								15.53	14.44	1.6	2.1	2	1.6	14.7	0.77				
1141								15.26	14.46	1.6	2	2	1.6	14.7	0.77				
1142								15.2	14.47	1.6	2.1	2	1.63	14.7	0.77				
1143								14.8	14.47	1.6	2	2	1.63	14.7	0.77				
1144								14.65	14.5	1.7	2	2	1.69	14.7	0.79				
1145	47374	119	119	1.475	1.44	1.05	0.99	14.64	14.53	1.7	2.1	2.1	1.7	14.7	0.81				
1146	47921	120	120	1.465	1.455	1.14	1.08	14.61	14.58	1.8	2.1	2.1	1.74	14.7	0.81				
1147	47952	120	121	1.46	1.48	1.15	1.09	14.59	14.65	1.8	2.2	2.2	1.77	14.7	0.81				
1148	47999	120	123	1.46	1.51	1.15	1.09	14.59	14.74	1.9	2.2	2.2	1.74	14.7	0.82				
1149	48046	120	125	1.48	1.54	1.16	1.1	14.65	14.86	1.9	2.2	2.3	1.73	14.7	0.83				
1150	48077	122	124	1.495	1.54	1.18	1.12	14.7	14.86	1.9	2.2	2.3	1.74	14.7	0.83				
1151	48124	121	124	1.515	1.54	1.18	1.12	14.76	14.86	1.9	2.2	2.3	1.73	14.7	0.84				
1152	48171	123	125	1.525	1.545	1.18	1.12	14.79	14.89	2	2.3	2.3	1.8	14.7	0.85				
1153	48218	118	125	1.415	1.54	1.18	1.12	14.46	14.86	2	2.3	2.4	1.83	14.7	0.86				
1154	48265	113	125	1.3	1.54	1.18	1.12	14.12	14.86	2	2.3	2.4	1.81	14.7	0.85				
1155	48311	113	125	1.31	1.54	1.18	1.12	14.15	14.86	2.1	2.3	2.4	1.83	14.7	0.85				
1156	48343	111	125	1.24	1.555	1.18	1.12	13.95	14.95	2.1	2.3	2.4	1.8	14.7	0.85				
1157	48382	109	125	1.205	1.56	1.18	1.12	13.85	14.98	2.2	2.3	2.5	1.85	14.7	0.85	0.980612	1.85		
1158	48429	108	125	1.19	1.575	1.18	1.12	13.8	15.07	2.1	2.3	2.5	1.8	14.7	0.85				
1159	48475	106	125	1.18	1.56	1.18	1.12	13.78	14.98	2.1	2.3	2.5	1.8	14.7	0.84				
1160	48507	105	125	1.21	1.535	1.18	1.12	13.86	14.83	2.1	2.2	2.4	1.77	14.7	0.85				

8:02 PM 7/19/2017

Select destination and press ENTER or choose Paste

Average: 6.065589569 Count: 18 Sum: 109.1806122 100%